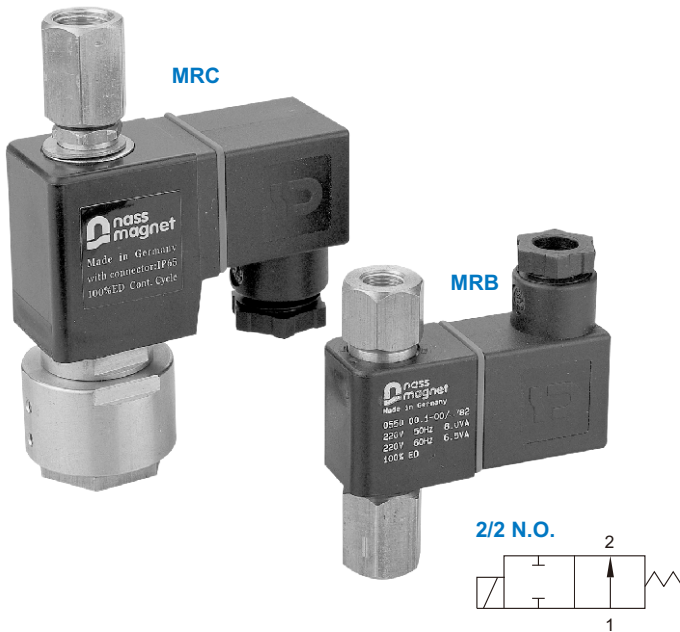


# MRB / MRC series

## 2/2 WAY N.O. PLUNGER TYPE SOLENOID VALVE



mindman



### Specification

- IP65 100% ED coil
- PTB approval EExmII T4 coil

### Power consumption

Coil power	2	3	2E	4	5	3E
AC(VA)	8.5/6.9	13/10	4.8	17.6/15.4	33/23	9.2
DC(W)	4.9	6.8	5.2	15	18.5	10

### Dimensions

Model	MRB			MRC		
Code	03	06		03	06	10
Dimension (mm)						
L	68			98		
H	50			53		
W	23			34		
S	19			16		
S'	-			8		
N.W.(Kg)	0.20			0.45		

### Order example

MRB-06-2-N-2-□-AC110

MODEL  
MRB  
MRC

CODE  
03: 1/8  
06: 1/4  
10: 3/8

FIG.  
1, 2, 3, 4, 5

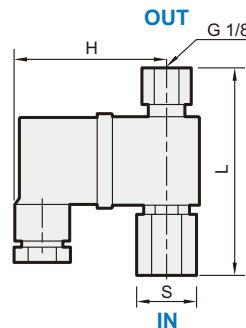
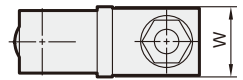
SEAL MAT'L  
N: NBR  
J: EPDM  
V: VITON

COIL  
2, 3, 2E  
4, 5, 3E  
(※)

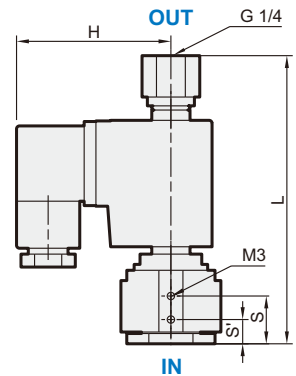
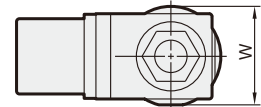
PLUG  
□: DIN  
D: LED  
G: 1/2" NPT  
Y: 2 wires

VOLTAGE  
AC220V(50/60)Hz  
AC110V(50/60)Hz  
DC24V

MRB



MRC



※ Explosion-Proof (2E/3E) coil with LED (D) plug is not applicable.

### Specification

Model **MRB**: Mini brass body, 2/2 way N.O., for water. air. gas. light oil.

Code (PIPE) G	Fig. no.	Mat'l		Coil	Orifice mm	Temp. 5~°C						Working press. bar			CV	VAC. torr
		Seal	Body			Coil 2/2E			Coil 3			Coil 2	Coil 3	Coil 2E		
						N	J	V	N	J	V					
03(1/8)	1	N, J, V	C	2,3,2E	1.3	80			90			0~14	0~20	0~10	0.05	10 <sup>-3</sup>
06(1/4)	2					120			120			0~10	0~15	0~7	0.09	

Model **MRC**: Brass body, 2/2 way N.O., for water. air. gas. light oil.

Code (PIPE) G	Fig. no.	Mat'l		Coil	Orifice mm	Temp. 5~°C						Working press. bar			CV	VAC. torr						
		Seal	Body			Coil 4/3E			Coil 5			Coil 4	Coil 5	Coil 3E								
						N	J	V	N	J	V											
03(1/8) 06(1/4) 10(3/8)	1	N	C	4 5 3E	1.6	90			120			90			150			0~16	0~24	0~16	0.10	10 <sup>-3</sup>
	2				2.0													0~13	0~20	0~13	0.15	
	3				2.2													0~10	0~16	0~10	0.17	
	4				2.5													0~7	0~10	0~7	0.20	
	5				3.0													0~5	0~7	0~5	0.31	