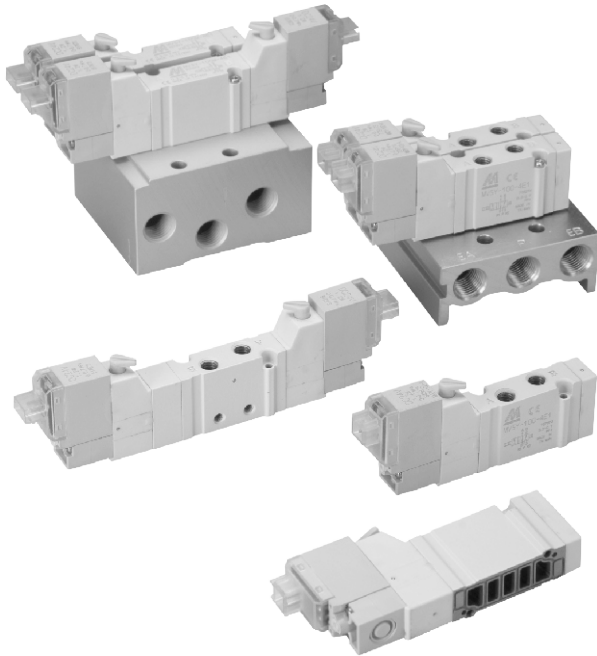


# MVSY-100 series

## SOLENOID VALVE



Mindman



### Specification

Model	4E1	4E2	4E2C.P.R
Bore No.	M5		
Port size	M5×0.8		
No. of port	5		
No. of position	2	3	
Medium	Air		
Operating pressure range	0.2~0.7 MPa		
Proof pressure	1 MPa		
Effective orifice	Body ported	4.5 mm <sup>2</sup>	4.5 mm <sup>2</sup>
	Manifold	4.5 mm <sup>2</sup>	4.5 / 5 / 4.5 mm <sup>2</sup>
Response time	12 ms	15 ms	
Ambient temperature	+5~+50°C		
Voltage	AC110V, AC220V (50/60)Hz, DC6/12/24V		
Power consumption	AC=1.6 / 2.5VA, DC=0.55W (LED indicator)		
Available voltage range	±10%		
Insulation class	B class		
Weight	30 g	43 g	55 g

### Order example of valve

MVSY – 100M – 4E2C – AC110 – LJ1

MODEL

BODY WIDTH

VOLTAGE

AC110V(50/60)Hz  
AC220V(50/60)Hz  
DC6V  
DC12V  
DC24V

PLUG TYPE

LJ: Plug on side (※1)

LR: Plug on side (※2)

WIRE LENGTH

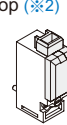
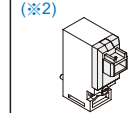
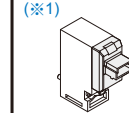
Blank: 500mm  
1: 1000mm  
2: 2000mm  
3: 3000mm

Blank: Body ported type  
M: Manifold type

4: 4way (5port)

E1: Single solenoid  
E2: Double solenoid

C: Closed center  
P: Pressure center  
R: Exhaust center  
(Only for 4E2 type)



※1. Connector with flying leads JPC type.

※2. Connector with flying leads RMH type. (Original)

### Order example of manifold

MVSY – 100M – 5M3 – G

MODEL

PORT THREAD

Blank: Rc thread  
G: G thread  
NPT: NPT thread

Blank: Body ported type  
M: Manifold type

MANIFOLD

5B: 5 port (for body ported type)  
5M: 5 port (for manifold type)

MANIFOLD NUMBER

1, 2, 3...

### Order example of wire

※ Use the same wire with MVDY.

MVDY – 100 – WA2J2

MODEL

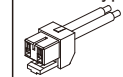
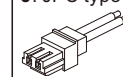
VOLTAGE

A2: AC220V(50/60)Hz  
A1: AC110V(50/60)Hz  
D: DC24V/12V/6V

WIRE

J: JPC type

R: RMH type



WIRE LENGTH

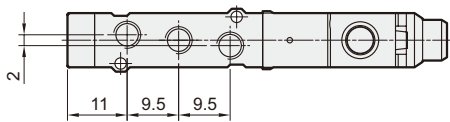
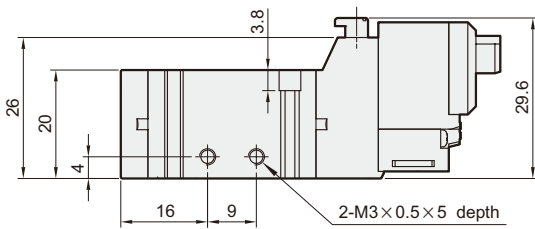
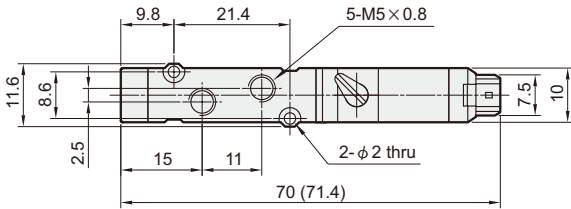
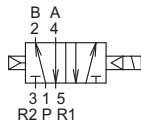
Blank: 500mm  
1: 1000mm  
2: 2000mm  
3: 3000mm

# MVSY-100 Dimensions

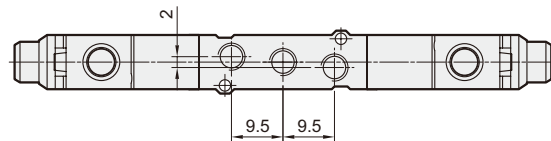
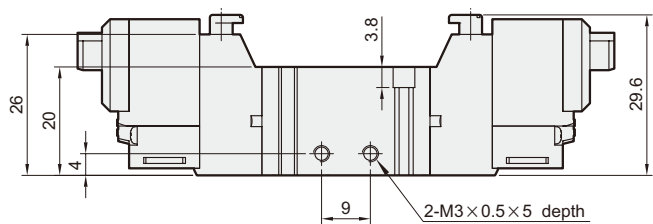
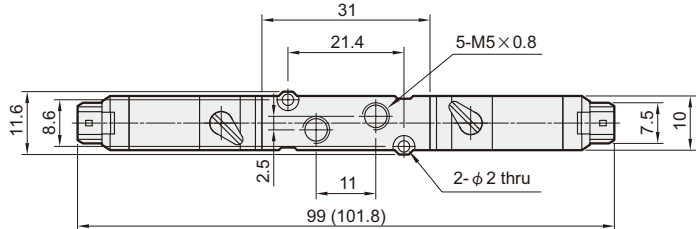
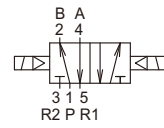
## SOLENOID VALVE



**MVSY-100-4E1**



**MVSY-100-4E2**

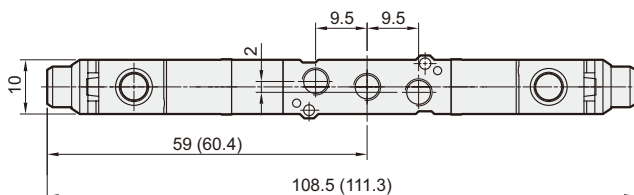
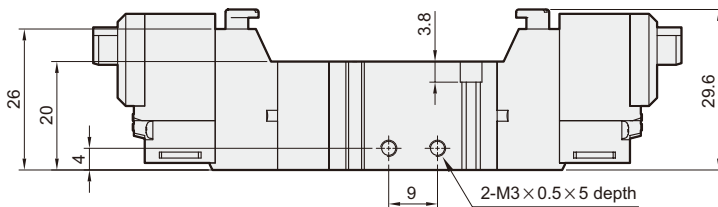
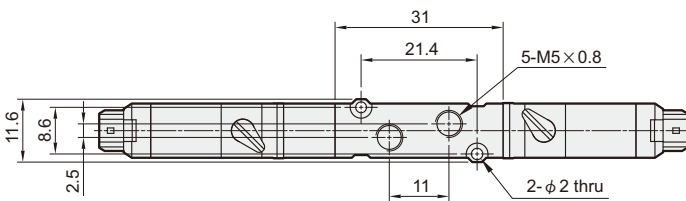
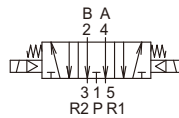
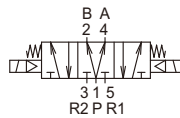
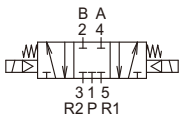


**MVSY-100-4E2C.P.R**

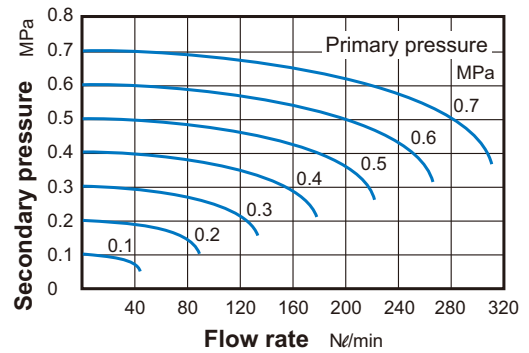
**MVSY-100-4E2C**

**MVSY-100-4E2P**

**MVSY-100-4E2R**



## Flow features



( ): Dimension for LJ plug type.

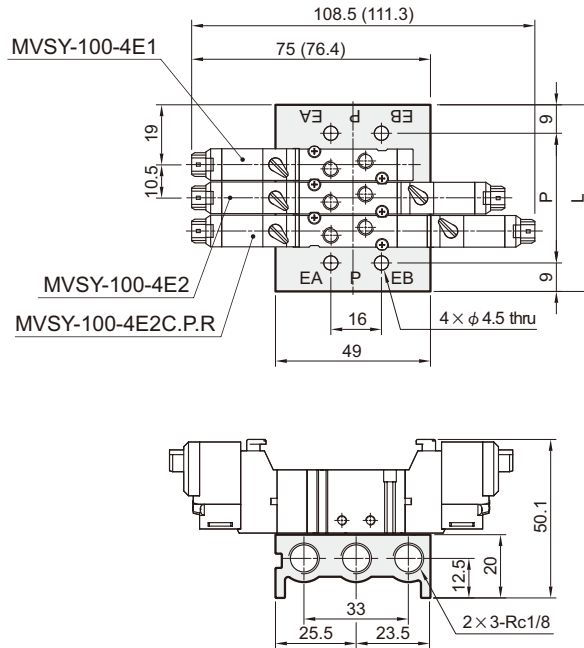
# MVSY-100 Manifold

## SOLENOID VALVE



### MVSY-100-5B\*

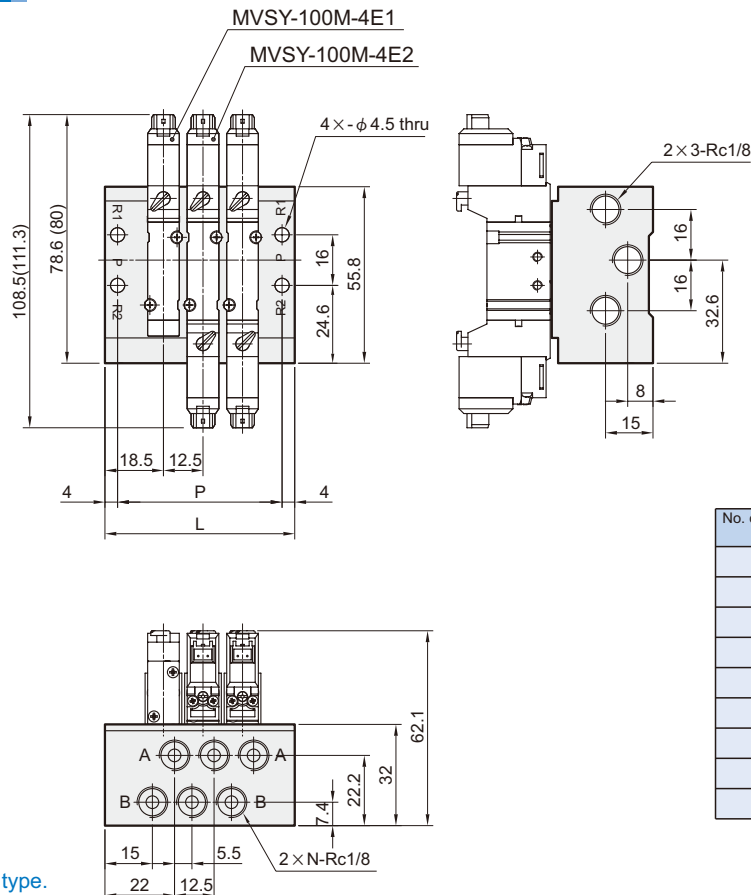
5 port (or body ported type)



No. of stations	P	L
2	30.5	48.5
3	41	59
4	51.5	69.5
5	62	80
6	72.5	90.5
7	83	101
8	93.5	111.5
9	104	122
10	114.5	132.5

### MVSY-100M-5M\*

5 port (for manifold type)



No. of stations (N)	P	L
2	39.5	47.5
3	52	60
4	64.5	72.5
5	77	85
6	89.5	97.5
7	102	110
8	114.5	122.5
9	127	135
10	139.5	147.5

( ) : Dimension for LJ plug type.

# MVSY-100 Mounting bracket

SOLENOID VALVE



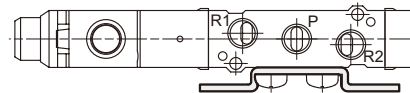
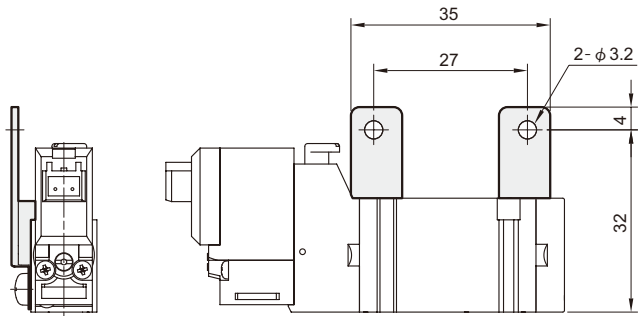
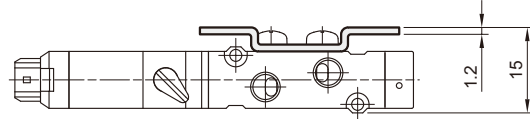
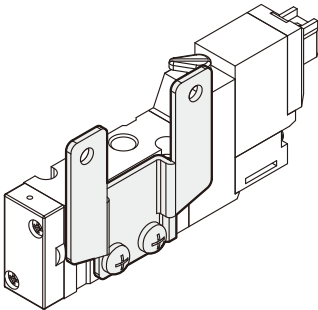
Order example of bracket

MVSY – 100 – 1A

MOUNTING BRACKET

1A  
2A

MVSY-100-1A



MVSY-100-2A

