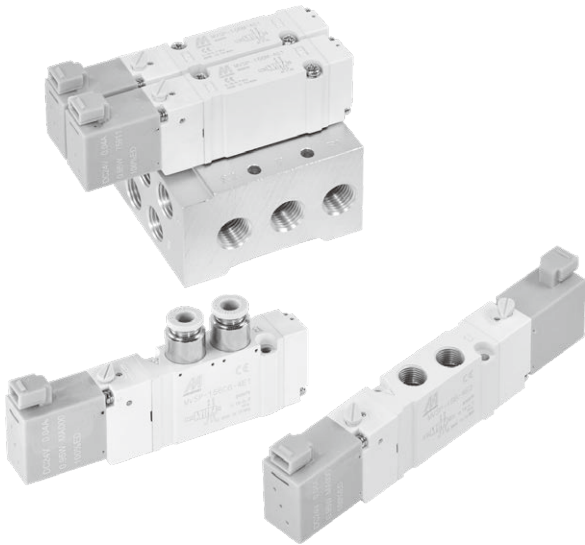


MVSP-156 series

SOLENOID VALVE



mindman

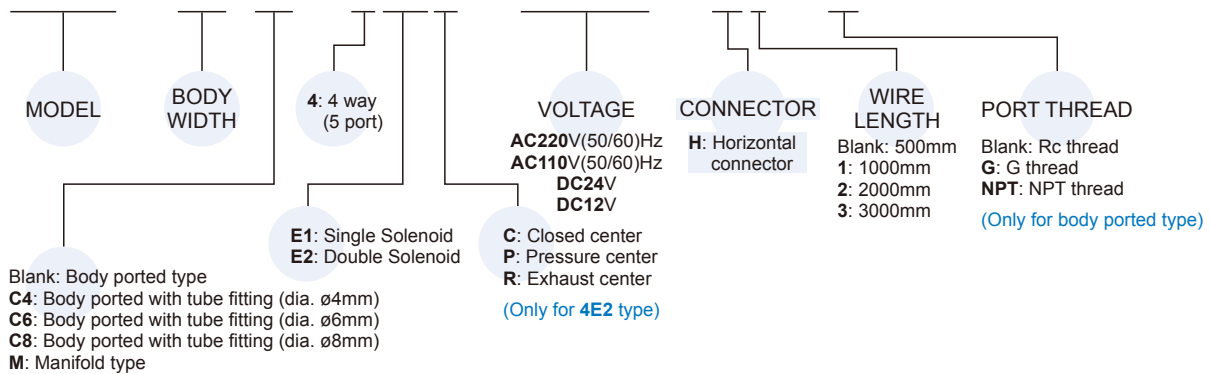


Specification

Model	4E1	4E2	4E2 C.P.R
Port size	Rc1/8		
No. of port / position	5/2		5/3
Medium	Air		
Operating pressure range	0.15~0.7 MPa		0.2~0.7 MPa
Proof pressure	1 MPa		
Effective orifice	Body ported	11 mm ²	9.5/14.6/9.5 mm ²
	Manifold	10 mm ²	7.5/13/8 mm ²
Response time	30 ms		
Ambient temperature	-5~+50°C (No freezing)		
Voltage	AC110V, 220V (50/60)Hz, DC24/12V		
Power consumption	AC=2.5VA, DC=0.95W		
Available voltage range	±10%		
Insulation class	F class		
Weight	83 g	118 g	127 g

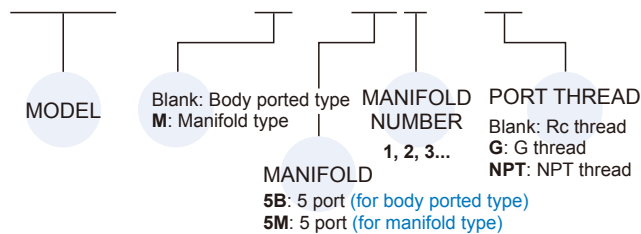
Order example of valve

MVSP – 156M – 4E2C – AC110 – H1 – G



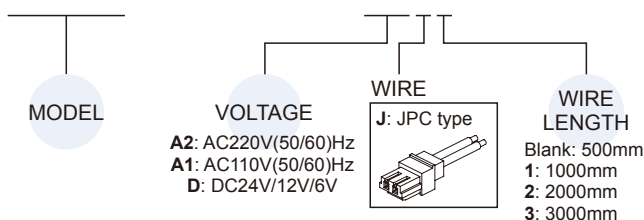
Order example of manifold * Use the same manifold with MVSY.

MVSY – 156M – 5B3 – G



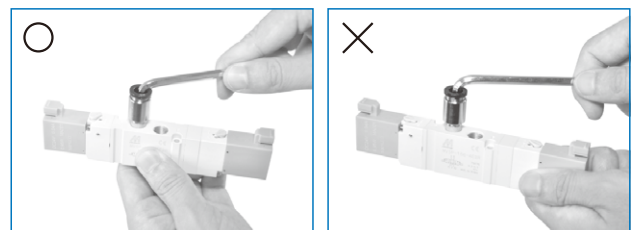
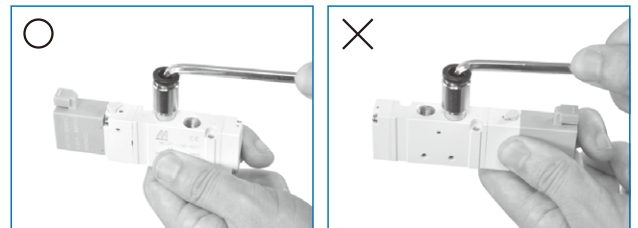
Order example of wire * Use the same wire with MVDY.

MVDY – 100 – WA2J2



Caution

Prohibit apply force to coil when tighten the tube fitting.

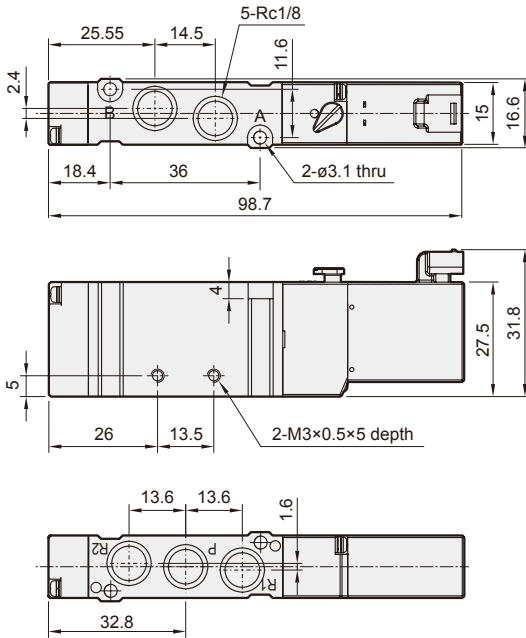
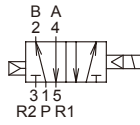


MVSP-156 Dimensions

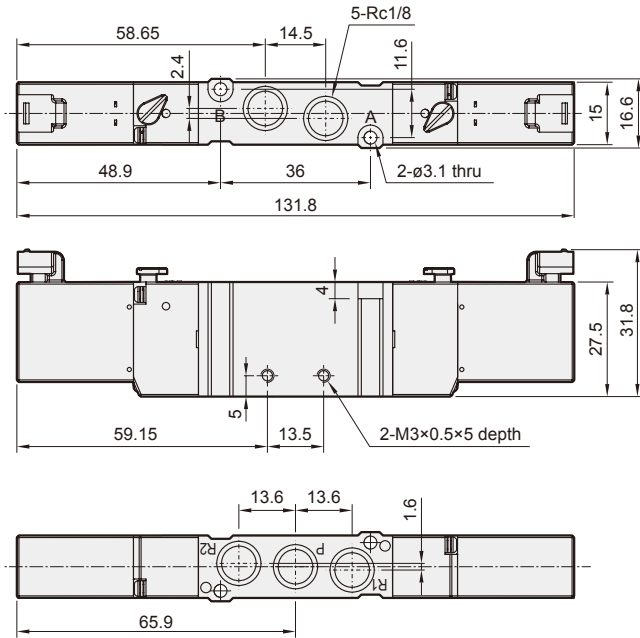
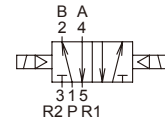
SOLENOID VALVE



MVSP-156-4E1



MVSP-156-4E2

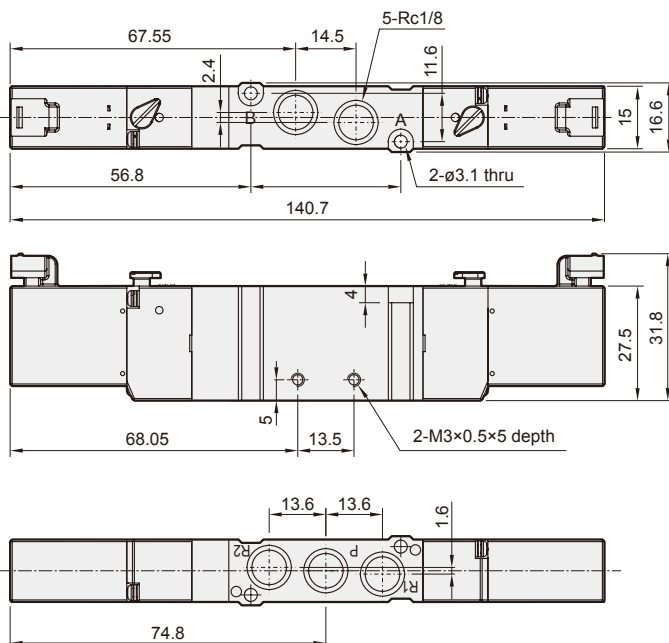
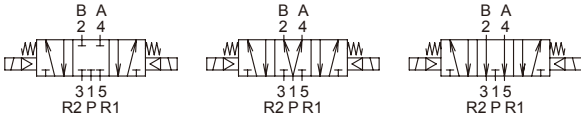


MVSP-156-4E2C.P.R

MVSP-156-4E2C

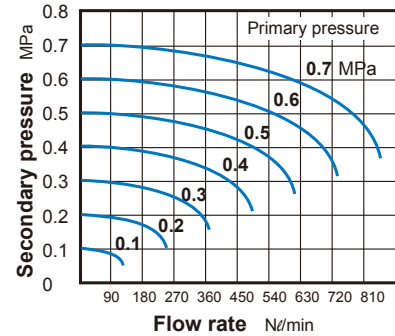
MVSP-156-4E2P

MVSP-156-4E2R

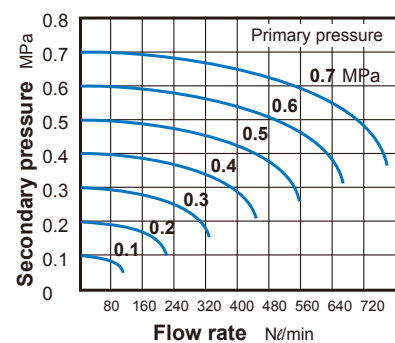


Flow features

MVSP-156-4E1/4E2



MVSP-156M-4E1/4E2



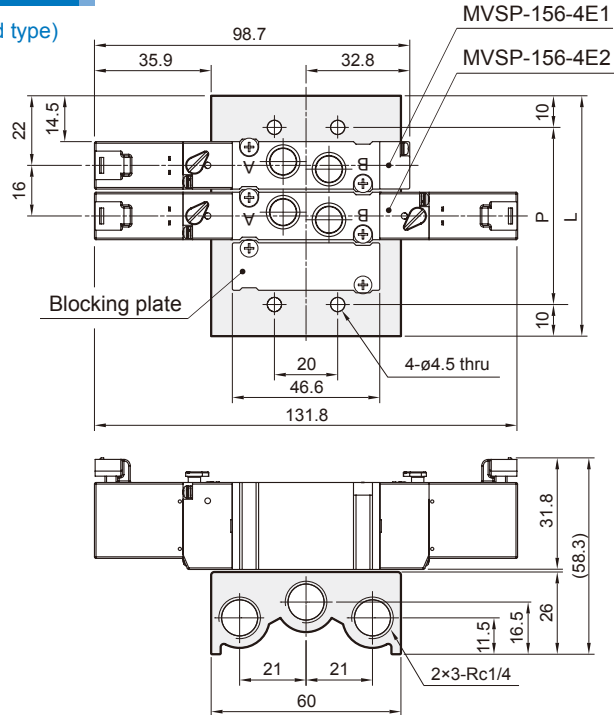
MVSP-156 Manifold

SOLENOID VALVE



MVSY-156-5B*

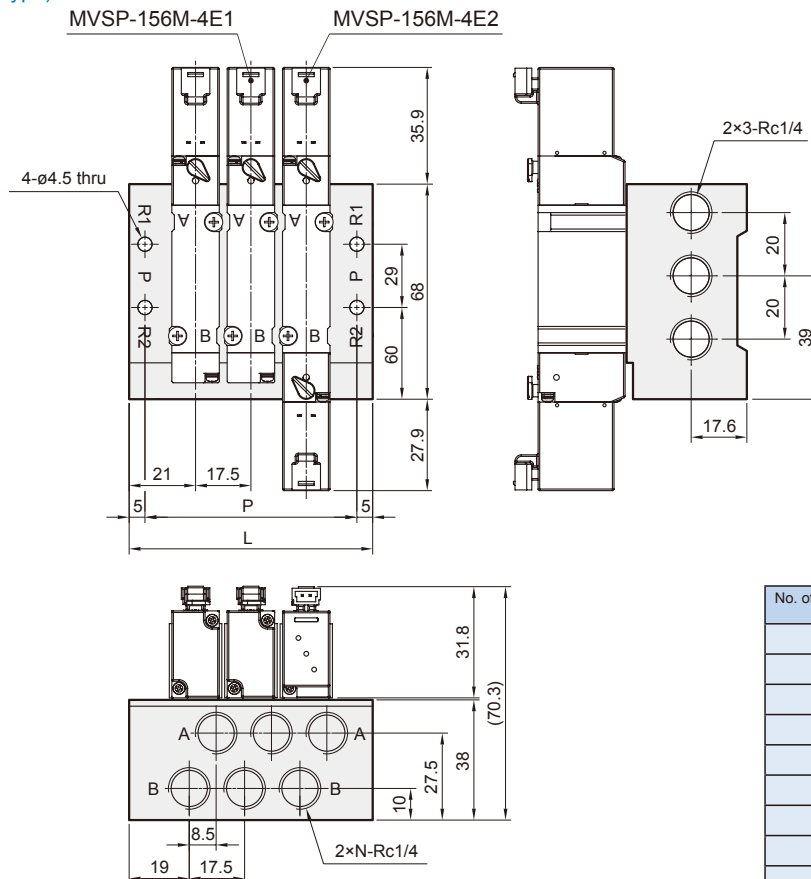
5 port (for body ported type)



No. of stations	P	L
2	40	60
3	56	76
4	72	92
5	88	108
6	104	124
7	120	140
8	136	156
9	152	172
10	168	188

MVSY-156M-5M*

5 port (for manifold type)



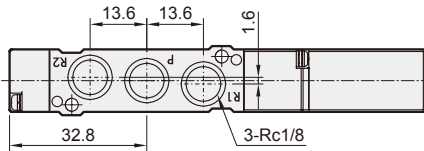
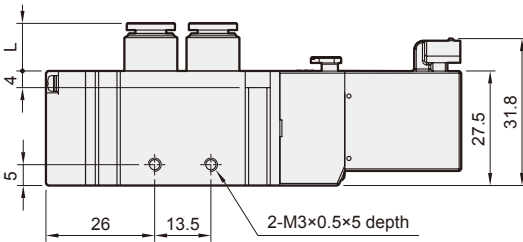
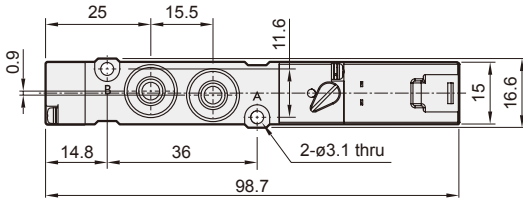
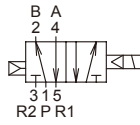
No. of stations (N)	P	L
2	49.5	59.5
3	67	77
4	84.5	94.5
5	102	112
6	119.5	129.5
7	137	147
8	154.5	164.5
9	172	182
10	189.5	199.5

MVSP-156 Dimensions

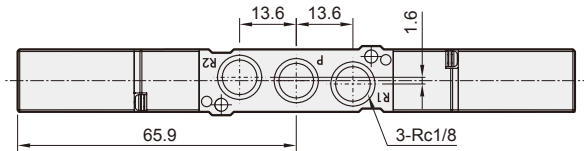
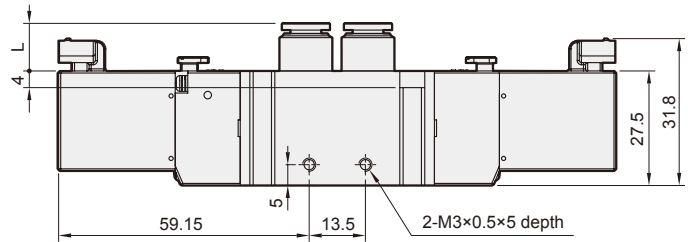
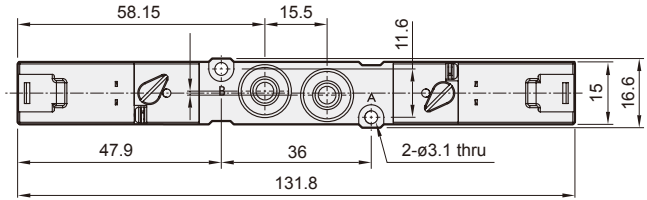
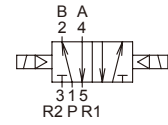
SOLENOID VALVE



MVSP-156C*-4E1



MVSP-156C*-4E2

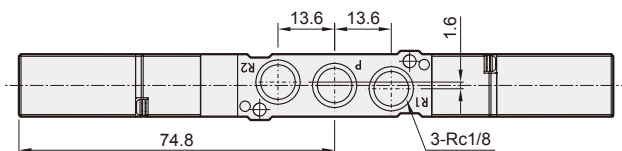
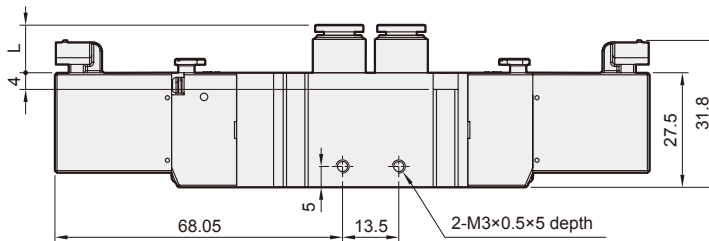
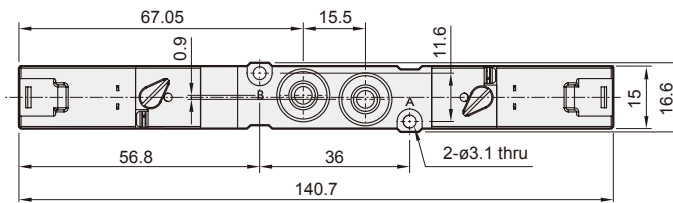
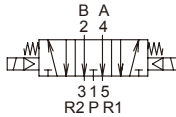
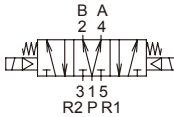
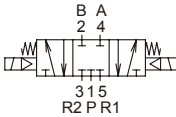


MVSP-156C*-4E2C.P.R

MVSP-156-4E2C

MVSP-156-4E2P

MVSP-156-4E2R



Code Port size	L
C4	13
C6	14
C8	18.5

MVSP-156 Mounting bracket & Spacer assembly

SOLENOID VALVE



mindman

Order example of bracket

* Use the same bracket with MVSYS.

MVSYS – 156 – 1A

MODEL

MOUNTING BRACKET

1A
2A

Order example of spacer assembly

* Use the same spacer assembly with MVSYS.

MVSYS – 156M – 5BP

MODEL

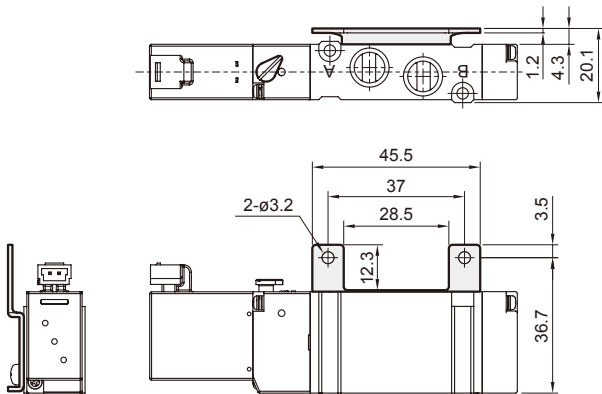
5B: 5 Port (for body ported type)
5M: 5 Port (for Manifold type)

SPACER ASSEMBLY

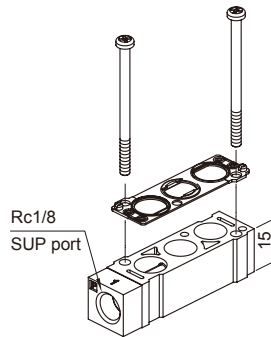
Blank: Body ported type
M: Manifold type

P: Individual SUP spacer assembly
R: Individual EXH spacer assembly
PR: Individual SUP spacer assembly+
Individual SUP spacer assembly

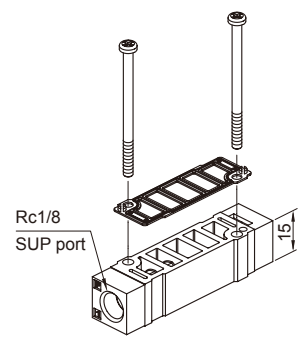
MVSYS-156-1A



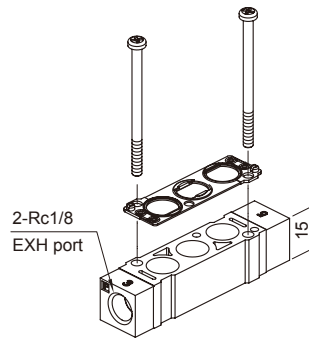
MVSYS-156-5BP



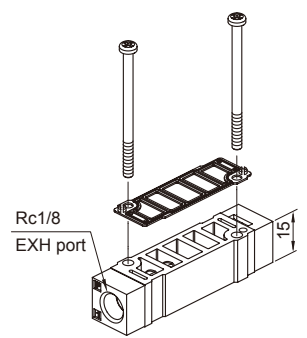
MVSYS-156M-5MP



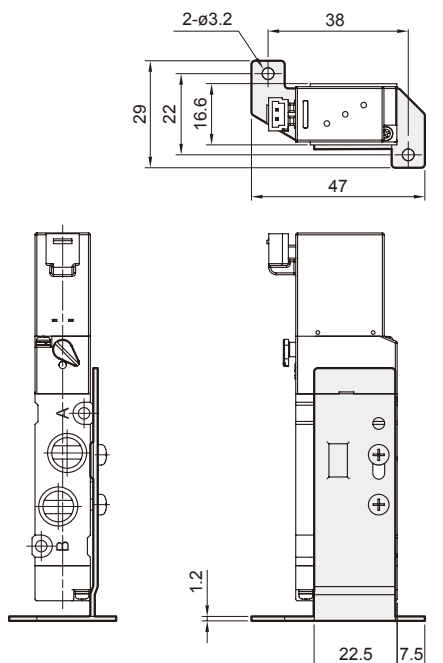
MVSYS-156-5BR



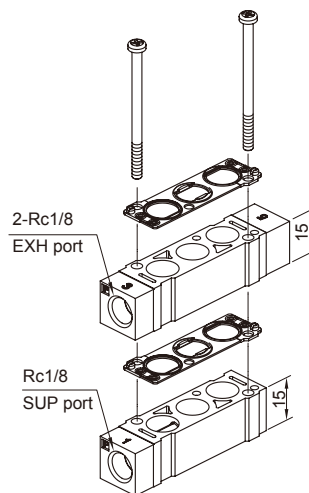
MVSYS-156M-5MR



MVSYS-156-2A



MVSYS-156-5BPR



MVSYS-156M-5MPR

