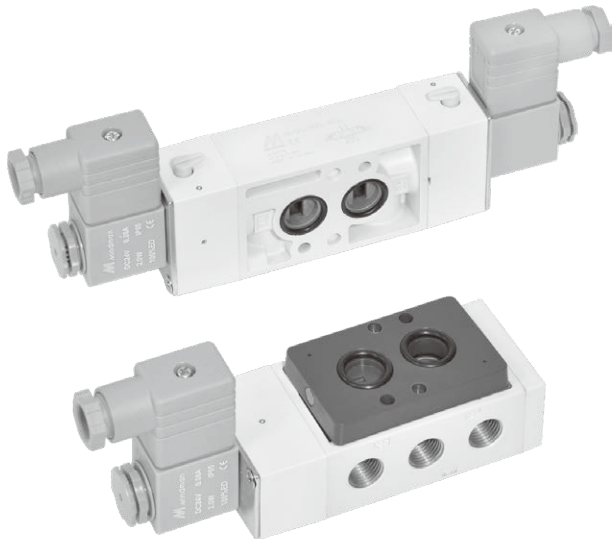


MVSN-300 series

NAMUR SOLENOID VALVE



Mindman



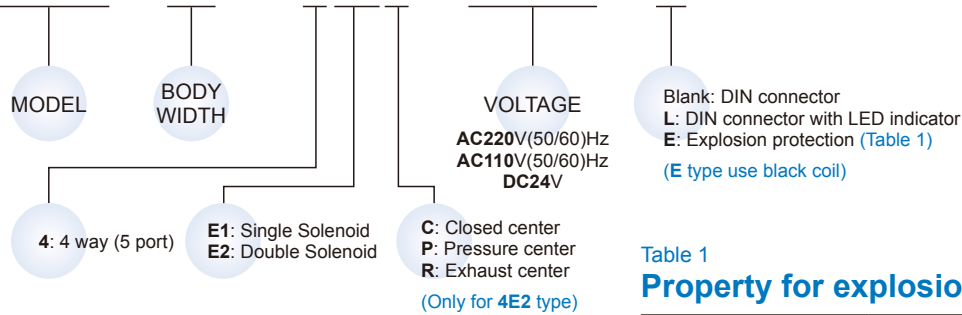
(with adapter)

Specification

Model	4E1	4E2	4E2 C.P.R
Bore No.	8A		
Port size	Rc1/4		
No. of port	5		
No. of position	2	3	
Medium	Air		
Operating perssure range	0.2~0.8 MPa		0.3~0.8 MPa
Proof pressure	1 MPa		
Effective orifice	35 mm ²	30 mm ²	
Reponse time	50 ms		
Ambient temperature	-5~+50°C (No freezing)		
Voltage	AC110V, 220V (50/60)Hz, DC24V		
Power consumption	AC=6/4.9VA, DC=2W		
Available voltage range	±10%		
Insulation calass	F class		
Weight	422 g	507 g	764 g

Order example of valve

MVSN — 300 — 4E2C — AC110 — L



Order example of adapter

MVSN — 300 — A

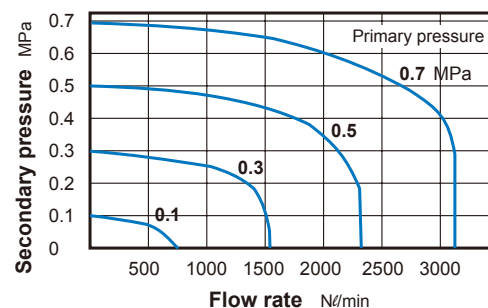


Table 1

Property for explosion-proof type

Anti-explosion class	EEx m II T4
Voltage	AC110V, 220V,(50/60)Hz, DC24V.
Power consumption	AC=4.4VA DC=5W
Available valtage range	±10%
Insulation class	F class

Flow features

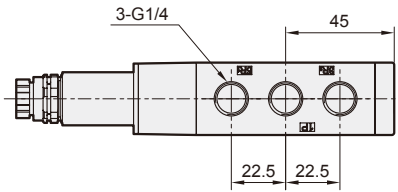
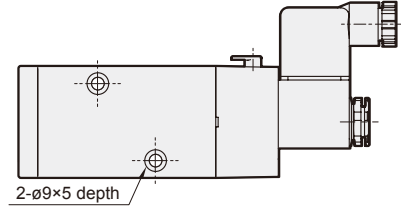
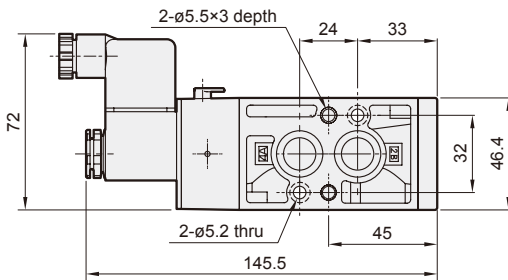
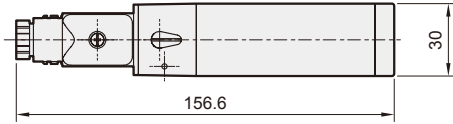
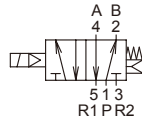


MVSN-300 Dimensions

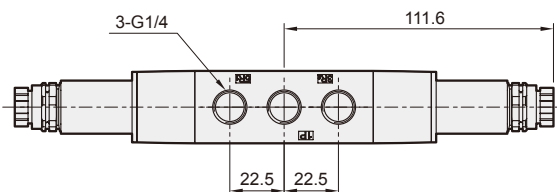
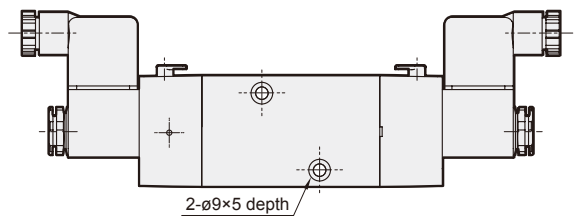
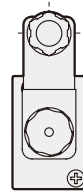
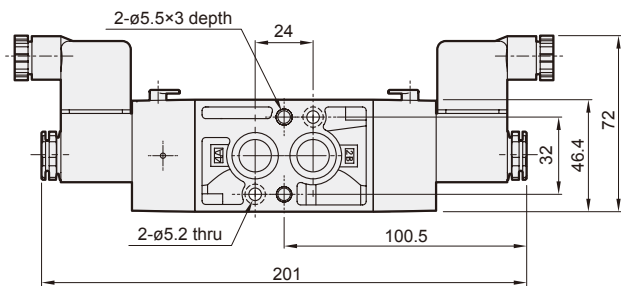
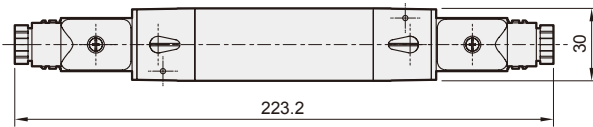
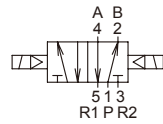
NAMUR SOLENOID VALVE



MVSN-300-4E1



MVSN-300-4E2



MVSN-300 Adapter

NAMUR SOLENOID VALVE



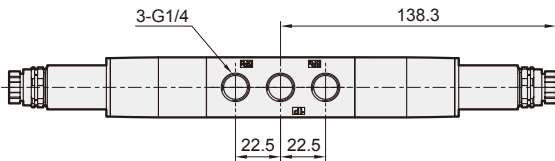
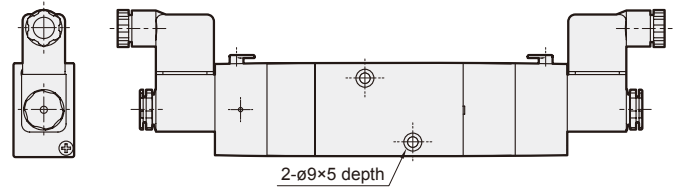
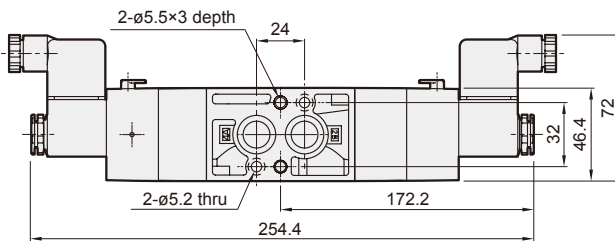
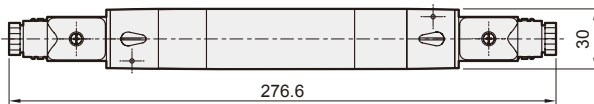
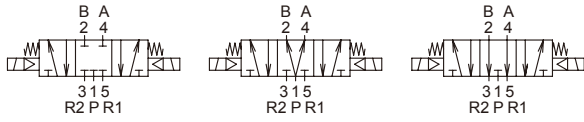
Mindman

MVSN-300-4E2C.PR

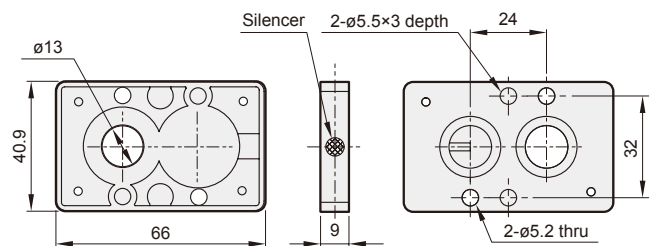
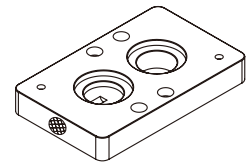
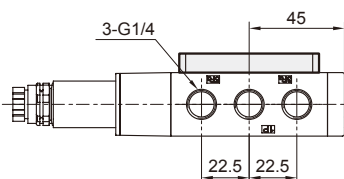
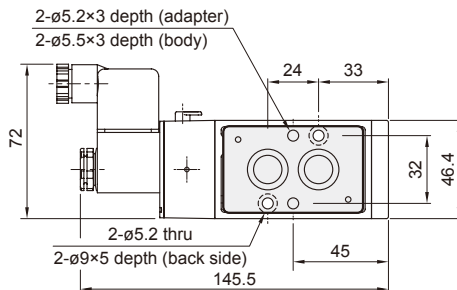
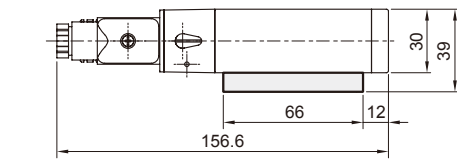
MVSN-300-4E2C

MVSN-300-4E2P

MVSN-300-4E2R



MVSN-300-A



- Solenoid valve without plate: 5/2 single acting
- Solenoid valve with plate: 3/2 single acting
- Silencer on the OPPOSITE side of the solenoid: N.C.
- Silencer on the SAME side of the solenoid: N.O.

