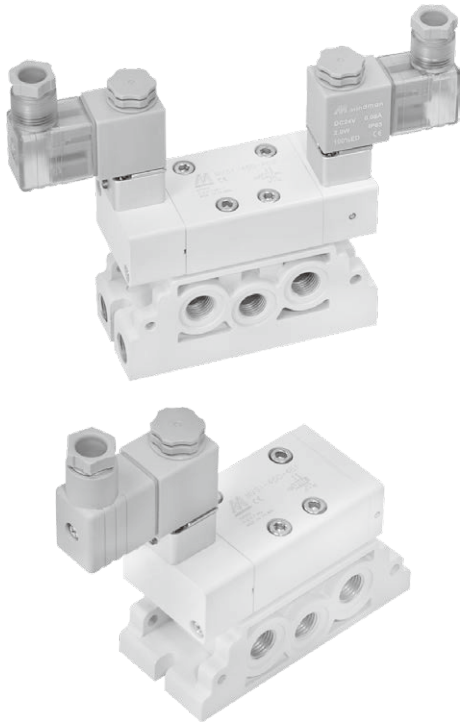


# MVSI-450 series

## ISO-1 SOLENOID VALVE



### Specification

Model	4E1	4E2
No. of port	5	
No. of position	2	
Medium	Air	
Operating pressure range	0.2~0.7 MPa	
Proof pressure	1 MPa	
Effective orifice	27 mm <sup>2</sup>	
Response time	40 ms	
Ambient temperature	-5~+50°C (No freezing)	
Voltage	AC110V, 220V (50/60)Hz, DC24V	
Power consumption	AC=6/4.9VA, DC=2W	
Available voltage range	±10%	
Insulation class	F class	
Weight	380 g	540 g

### Order example of valve

MVSI - 450 - 4E2 - AC110 - L

MODEL

BODY WIDTH

VOLTAGE

AC220V(50/60)Hz  
AC110V(50/60)Hz  
DC24V

Blank: DIN connector  
L: DIN connector with LED indicator  
E: Explosion protection (Table 1)  
(E type use black coil)

4: 4 way (5 port)

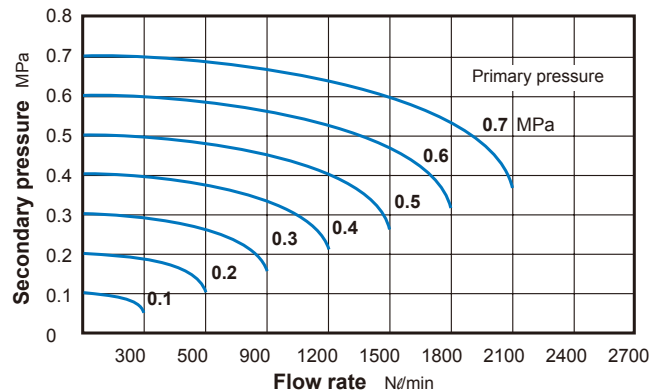
E1: Single Solenoid  
E2: Double Solenoid

Table 1

### Property for explosion-proof type

Anti-explosion class	EEx m II T4
Voltage	AC110V, 220V, (50/60)Hz, DC24V.
Power consumption	AC=4.4VA DC=5W
Available voltage range	±10%
Insulation class	F class

### Flow features



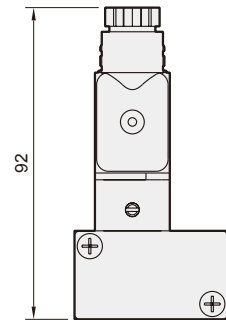
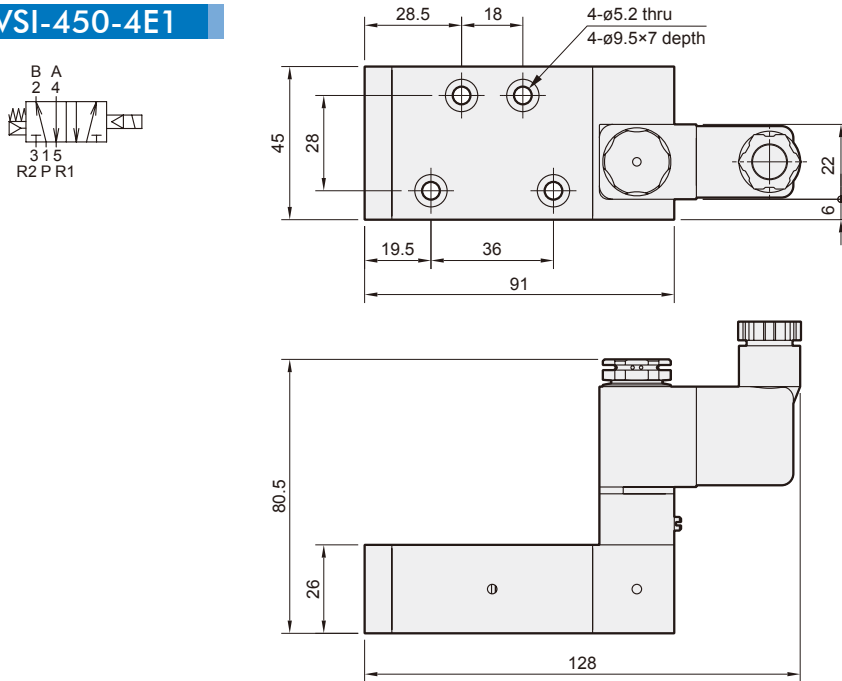
# MVSI-450 Dimensions

## ISO-1 SOLENOID VALVE

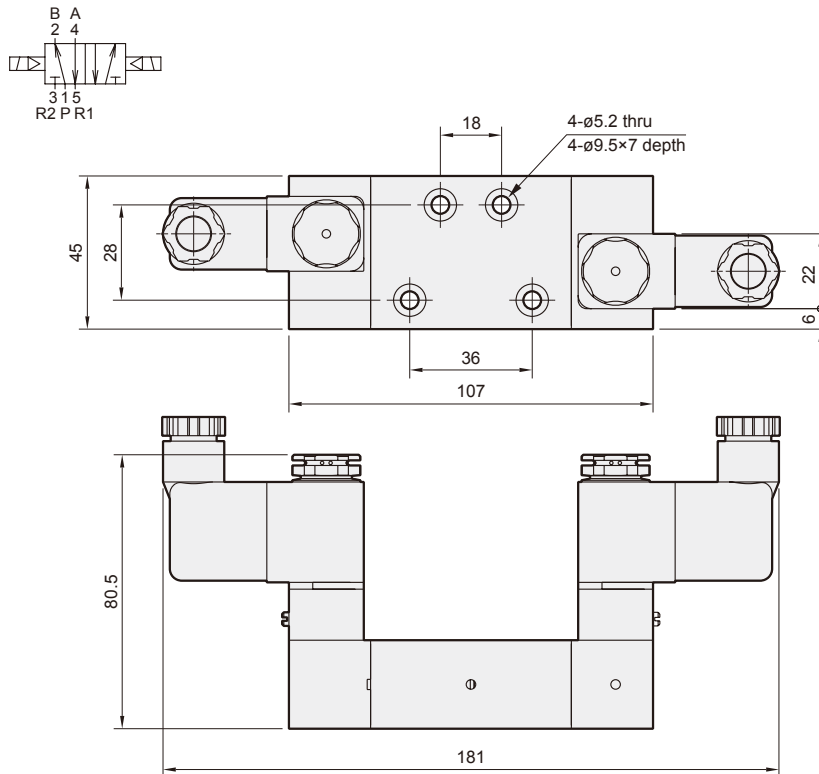


Mindman

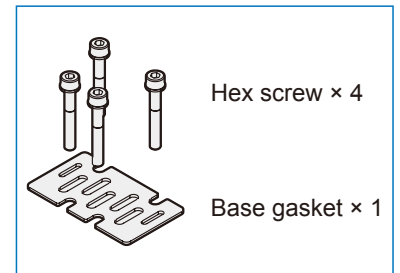
### MVSI-450-4E1



### MVSI-450-4E2

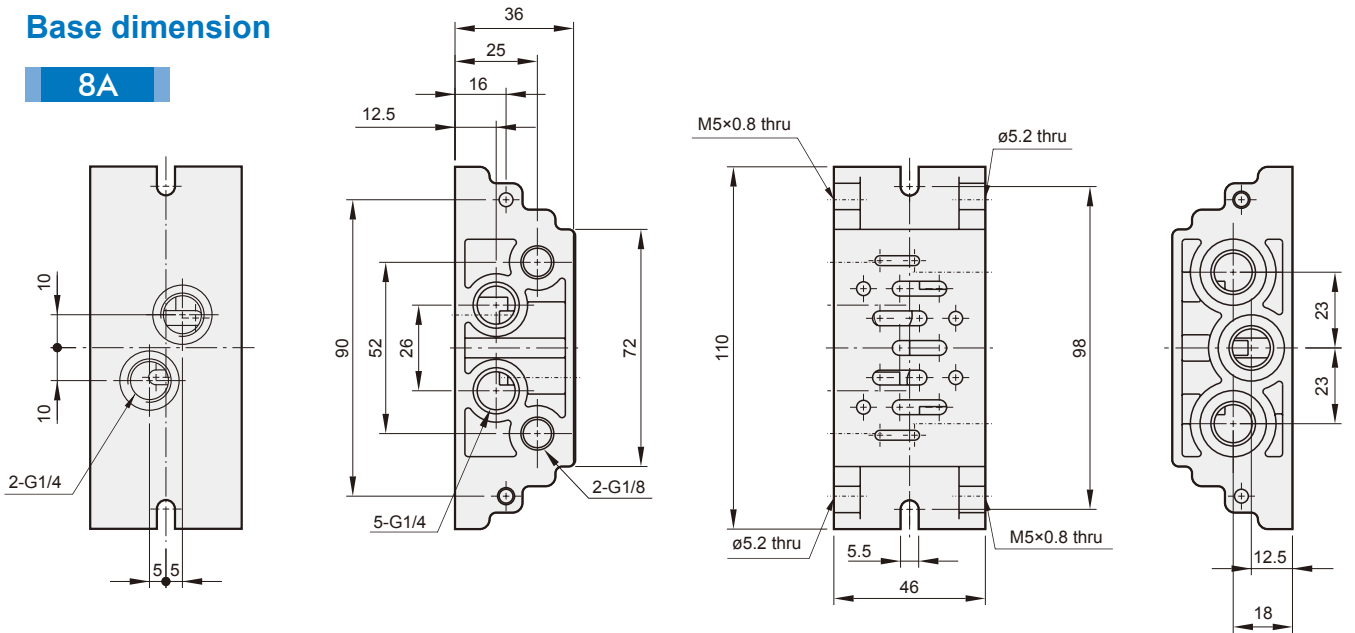


### Accessories



### Base dimension

8A



### Order example

MVSI - 1 - B - 8A

MODEL

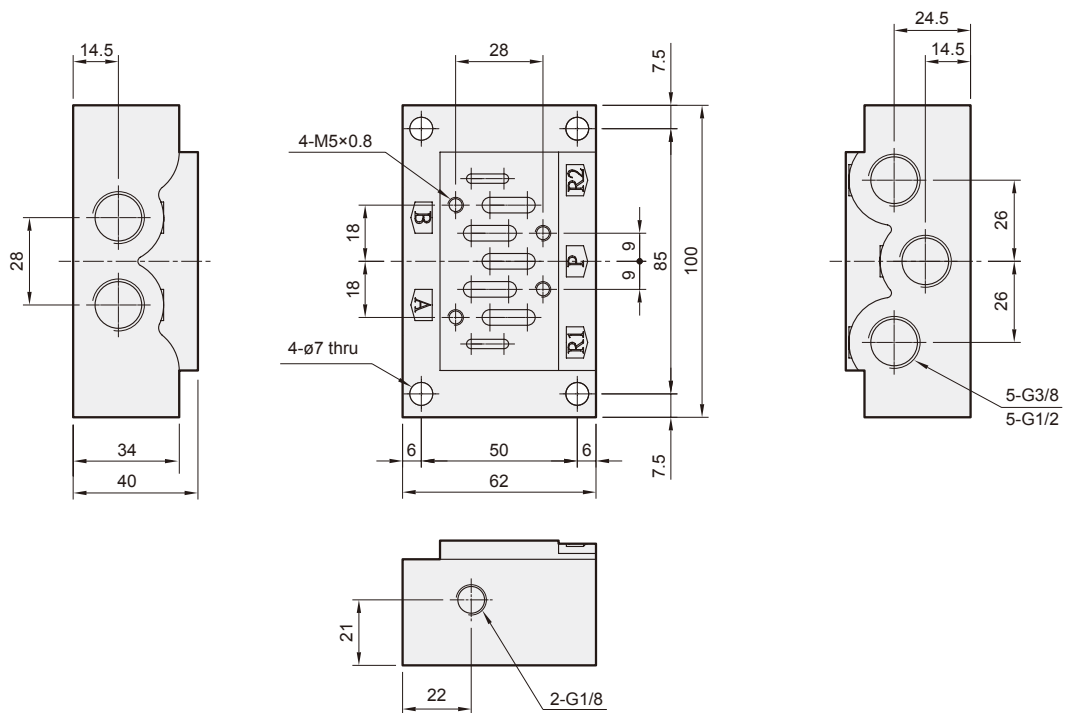
BASE

BORE SIZE

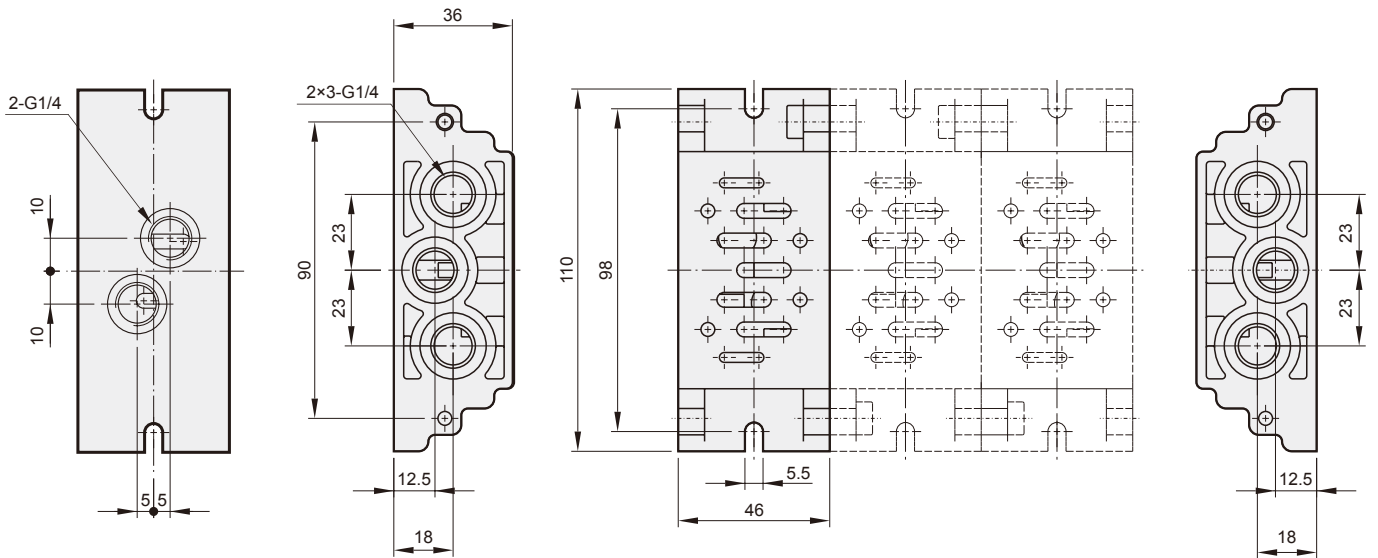
8A: G1/4  
10A: G3/8  
15A: G1/2

10A

15A



**Manifold of solenoid valve**



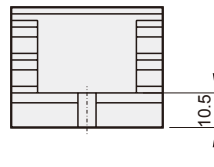
**Order example**

**MVSI - 1 - M2**

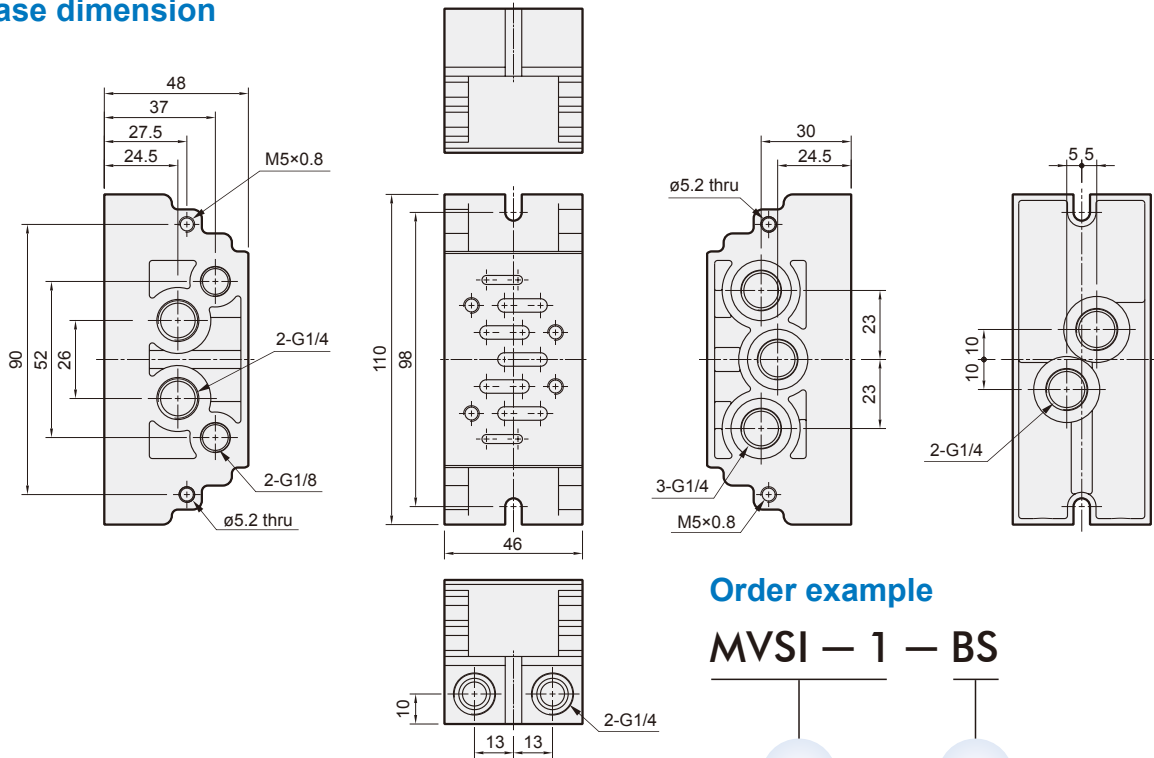
MODEL

MANIFOLD

NO. OF STATIONS  
1, 2, 3...



### Base dimension



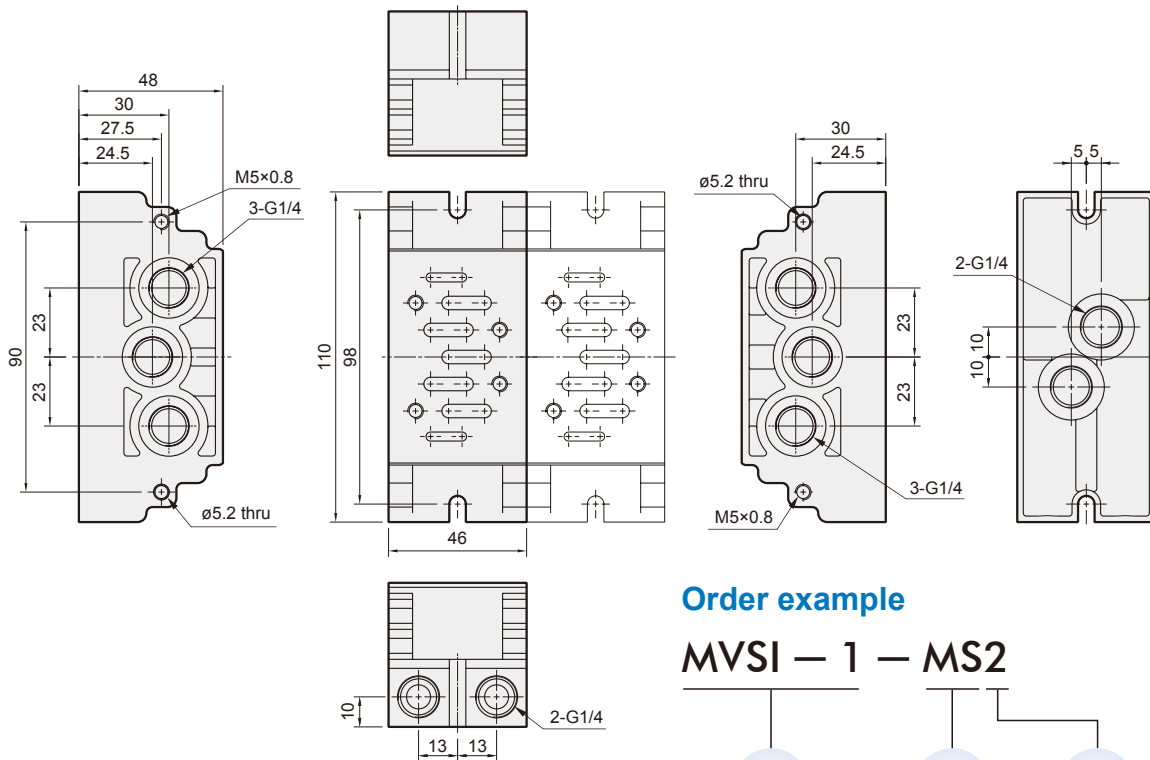
### Order example

MVSI — 1 — BS

MODEL

BASE

### Manifold of solenoid valve



### Order example

MVSI — 1 — MS2

MODEL

MANIFOLD

NO. OF STATIONS  
1, 2, 3...