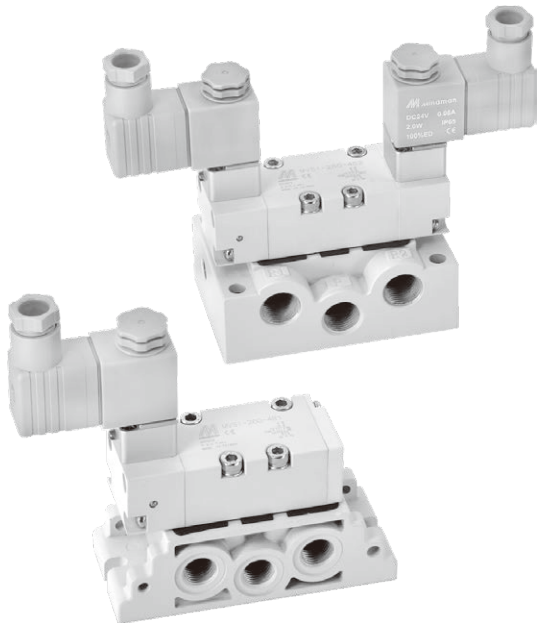


MVSI-260 series

ISO-1 SOLENOID VALVE



Specification

Model	4E1	4E2	4E2 C.P.R
No. of port	5		
No. of position	2	3	
Medium	Air		
Operating perssure range	0.2~0.7 MPa	0.3~0.7 MPa	
Proof pressure	1 MPa		
Effective orifice	22 mm ²	20 mm ²	
Reponse time	40 ms		
Ambient temperature	-5~+50°C (No freezing)		
Voltage	AC110V, 220V (50/60)Hz, DC24V		
Power consumption	AC=6/4.9VA, DC=2W		
Available voltage range	±10%		
Insulation calss	F class		
Weight	312 g	422 g	572 g

Order example of valve

MVSI – 260 – 4E2C – AC110 – L

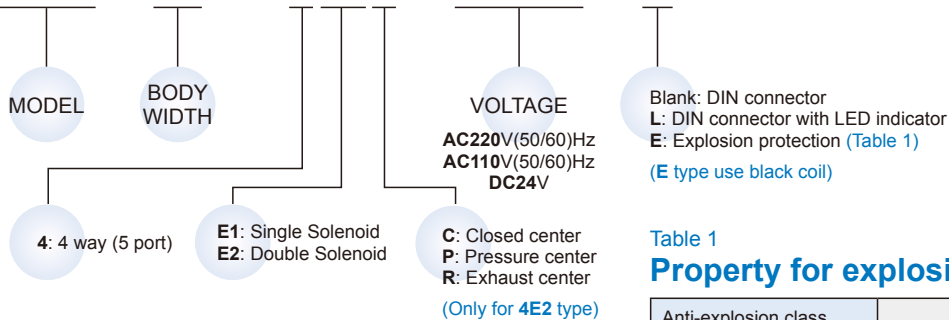


Table 1

Property for explosion-proof type

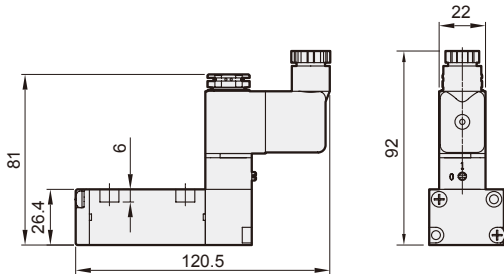
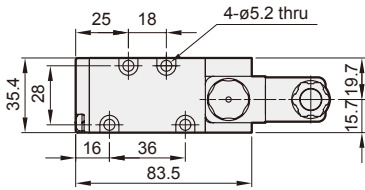
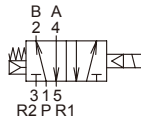
Anti-explosion class	EEx m II T4
Voltage	AC110V, 220V,(50/60)Hz, DC24V.
Power consumption	AC=4.4VA DC=5W
Available valtage range	±10%
Insulation class	F class

MVSI-260 Dimensions

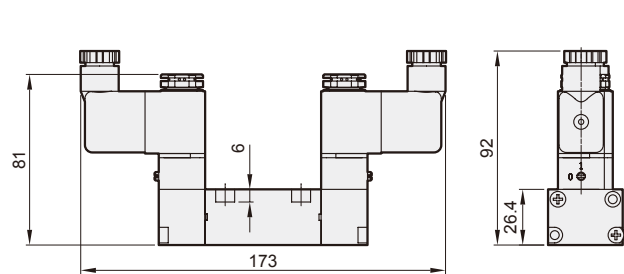
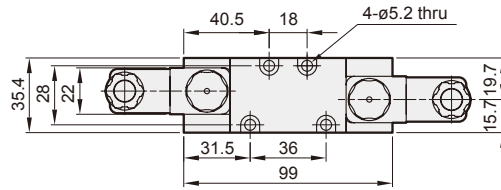
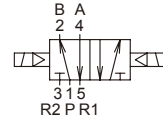
ISO-1 SOLENOID VALVE



MVSI-260-4E1

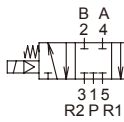


MVSI-260-4E2

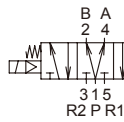


MVSI-260-4E2C.P.R

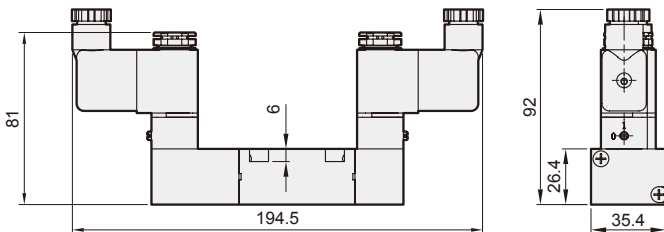
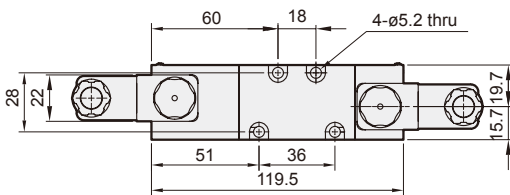
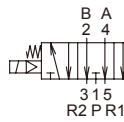
MVSI-260-4E2C



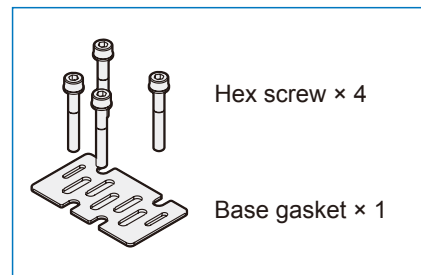
MVSI-260-4E2P



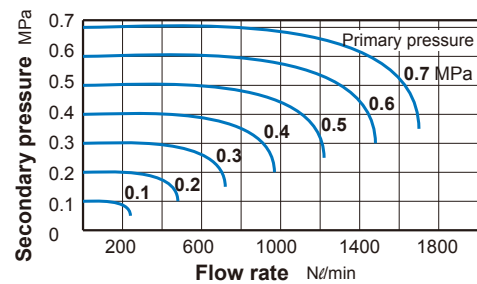
MVSI-260-4E2R



Accessories

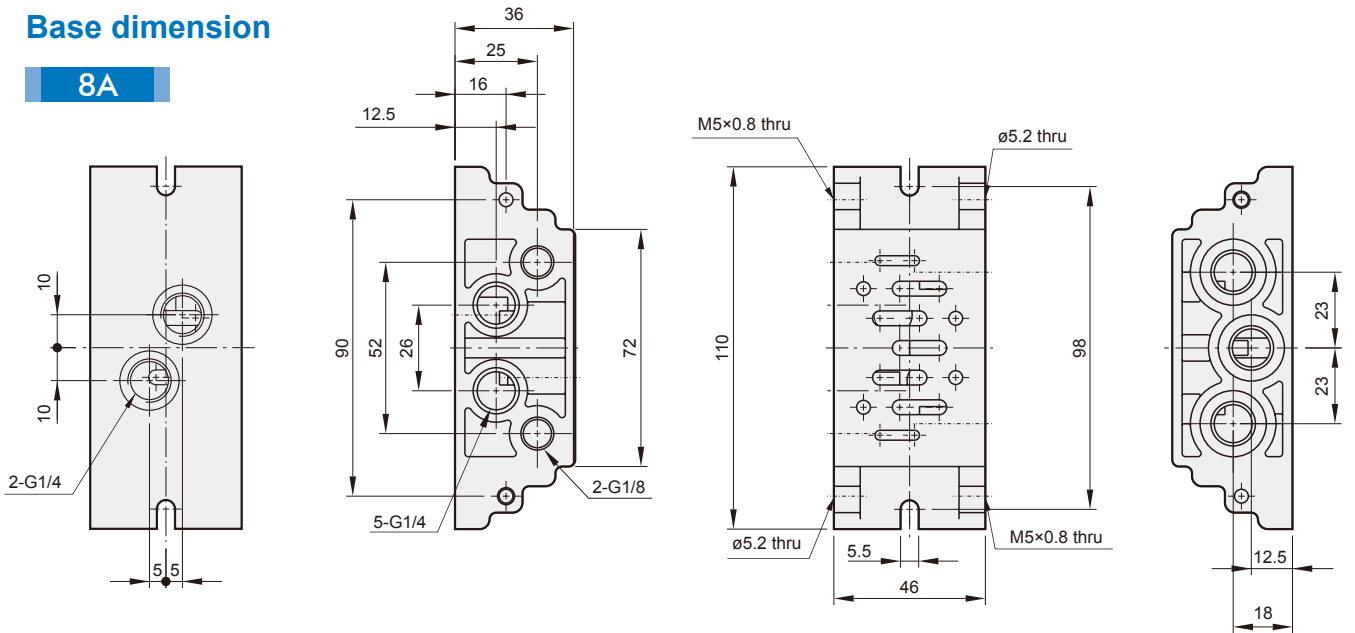


Flow features



Base dimension

8A



Order example

MVSI - 1 - B - 8A

MODEL

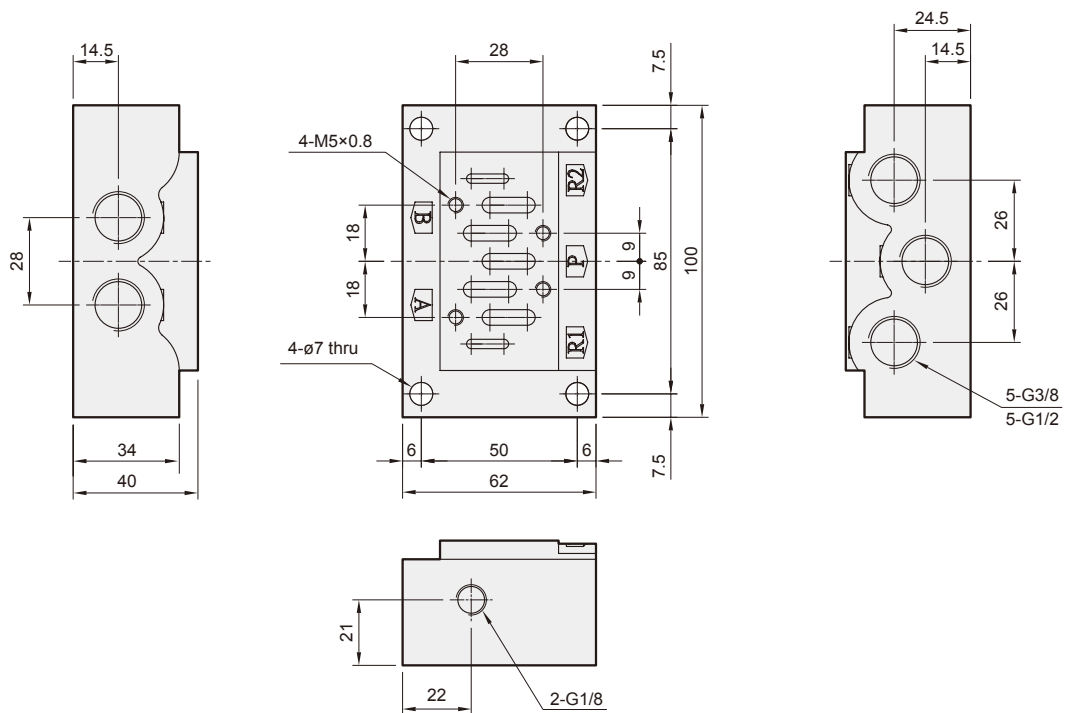
BASE

BORE SIZE

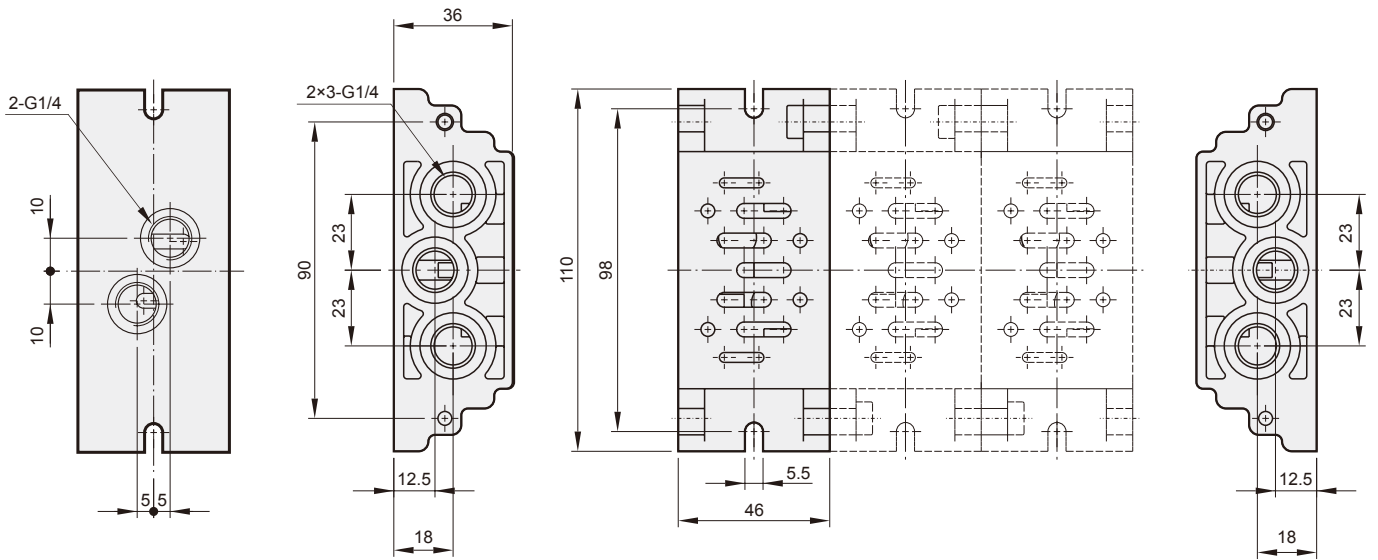
8A: G1/4
10A: G3/8
15A: G1/2

10A

15A



Manifold of solenoid valve



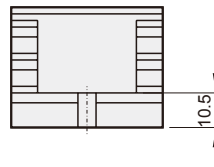
Order example

MVSI - 1 - M2

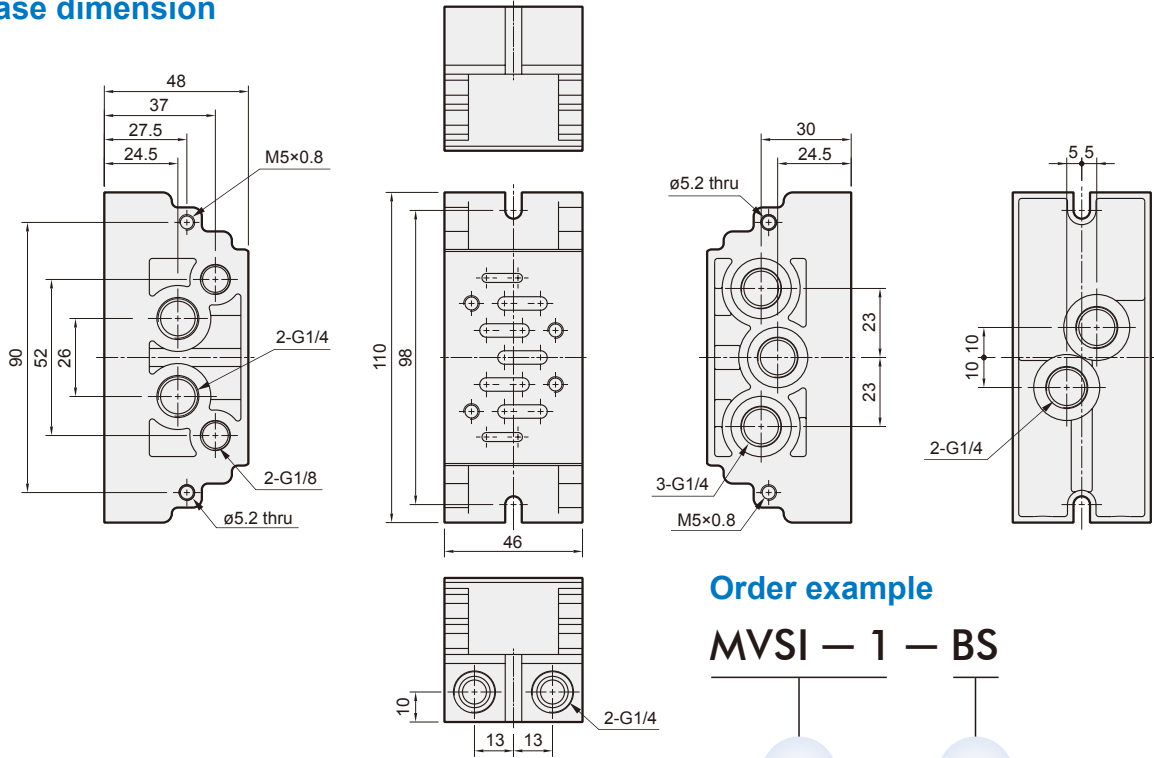
MODEL

MANIFOLD

NO. OF STATIONS
1, 2, 3...



Base dimension



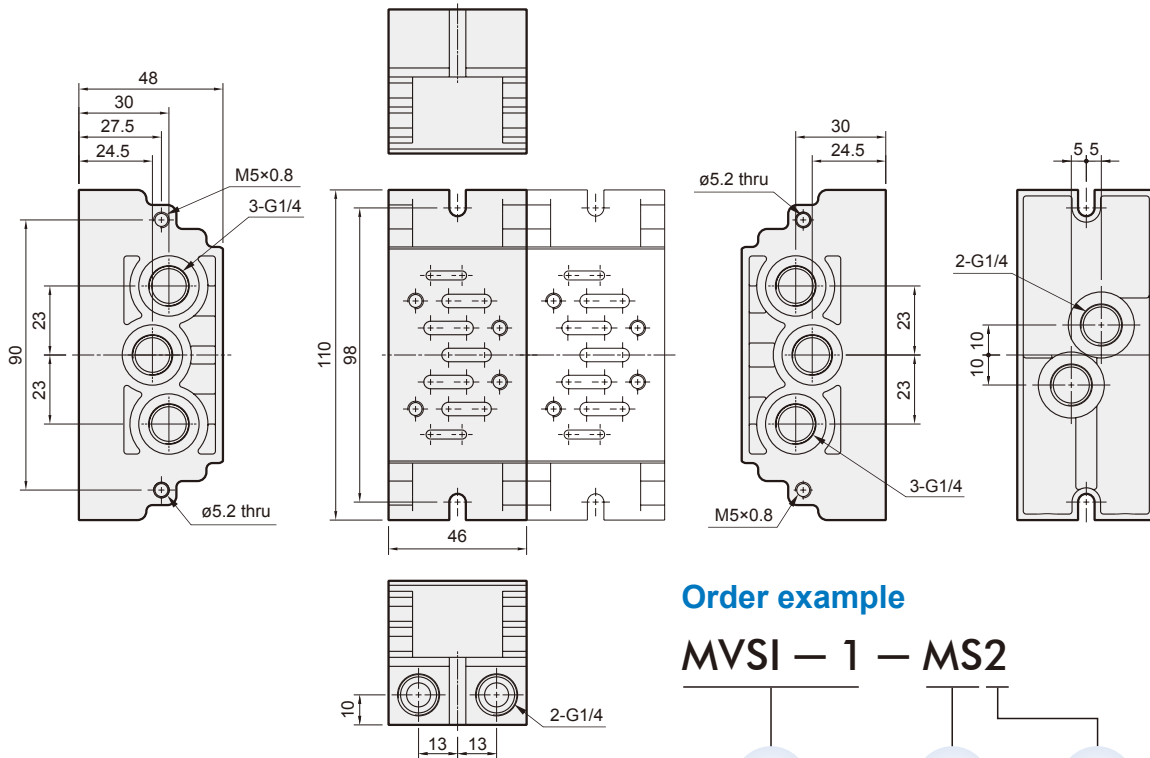
Order example

MVSI — 1 — BS

MODEL

BASE

Manifold of solenoid valve



Order example

MVSI — 1 — MS2

MODEL

MANIFOLD

NO. OF STATIONS
1, 2, 3...