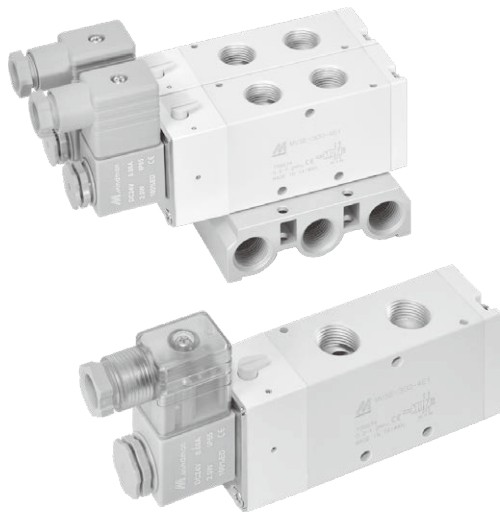


# MVSE-300 series

## SOLENOID VALVE



### Specification

Model	4E1	4E2	4E2C.P.R
Bore No.	10A		
Port size	Rc3/8		
No. of port	5		
No. of position	2	3	
Medium	Air		
Operating perssure range	0.2~1.2 MPa	0.3~1.2 MPa	
Proof pressure	1.5 MPa		
Effective orifice	35 mm <sup>2</sup>	34.5 mm <sup>2</sup>	
Reponse time	50 ms		
Ambient temperature	-5~+50°C (No freezing)		
Voltage	AC110V, 220V (50/60)Hz, DC24V		
Power consumption	AC=6/4.9VA, DC=2W		
Available voltage range	±10%		
Insulation calss	F class		
Weight	406 g	508 g	577 g

### Order example of valve

**MVSE — 300 — 4E2C — AC110 — L — G**

MODEL

BODY WIDTH

VOLTAGE

AC220V(50/60)Hz  
AC110V(50/60)Hz  
DC24V

Blank: Din connector

L: Din connector with LED indicator  
E: Explosion protection (Table 1)

PORT THREAD

Blank: Rc thread  
G: G thread  
NPT: NPT thread

4: 4 way (5 port)

E1: Single Solenoid  
E2: Double Solenoid

C: Closed center  
P: Pressure center  
R: Exhaust center

(Only for 4E2 type)

Table 1

### Property for explosion-proof type

Anti-explosion class	EEx m II T4
Voltage	AC110V, 220V.(50/60)Hz, DC24V.
Power consumption	AC=4.4VA DC=5W
Available valtage range	±10%
Insulation class	F class

### Order example of manifold

**MVSE — 300 — 5B3 — G**

MODEL

MANIFOLD

5B: 5 port (for body ported type)

MANIFOLD NUMBER

1, 2, 3...

PORT THREAD

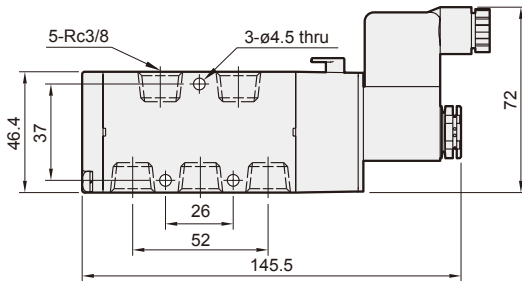
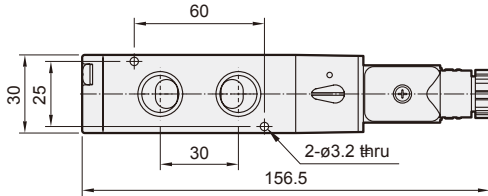
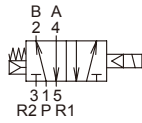
Blank: Rc thread  
G: G thread  
NPT: NPT thread

# MVSE-300 Dimensions

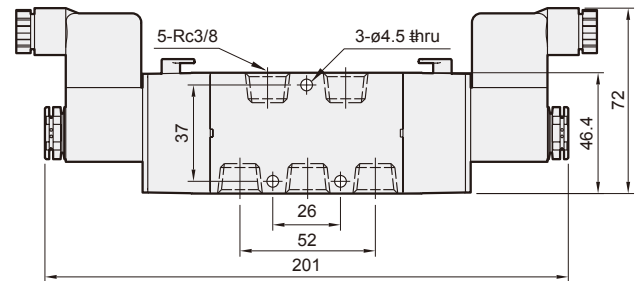
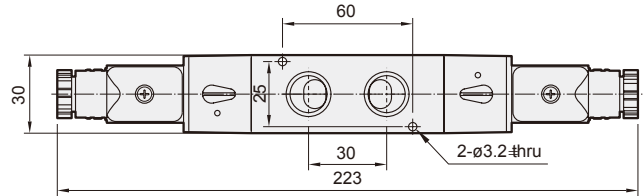
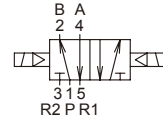
## SOLENOID VALVE



**MVSE-300-4E1**



**MVSE-300-4E2**

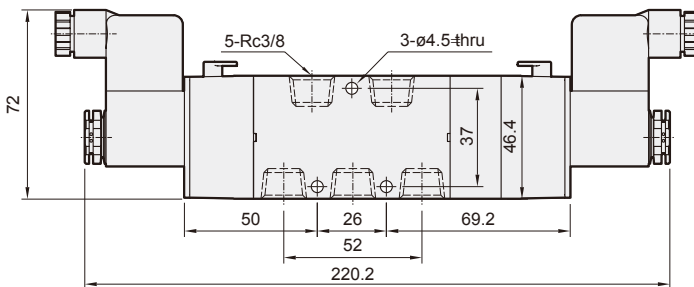
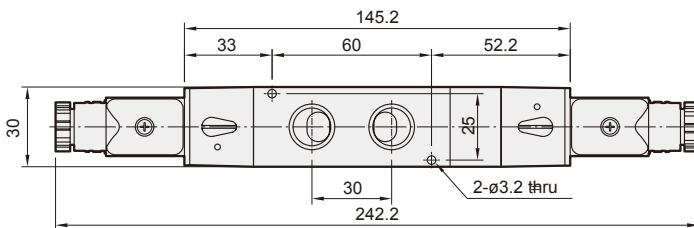
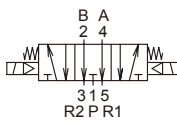
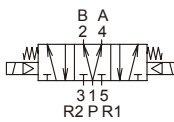
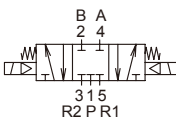


**MVSE-300-4E2C.PR**

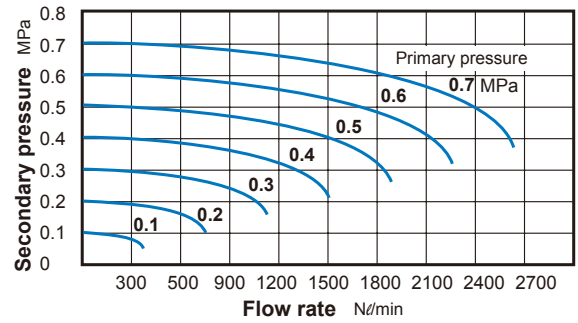
**MVSE-300-4E2C**

**MVSE-300-4E2P**

**MVSE-300-4E2R**



### Flow features



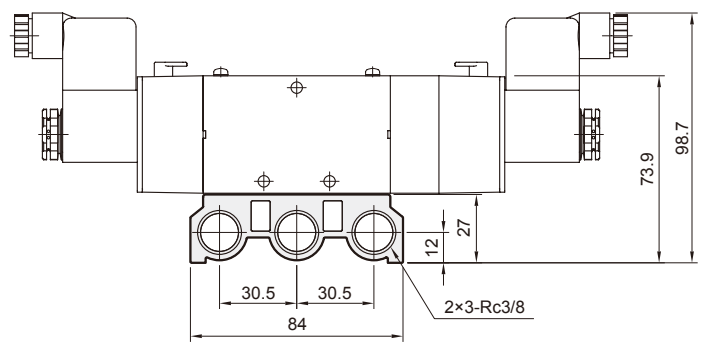
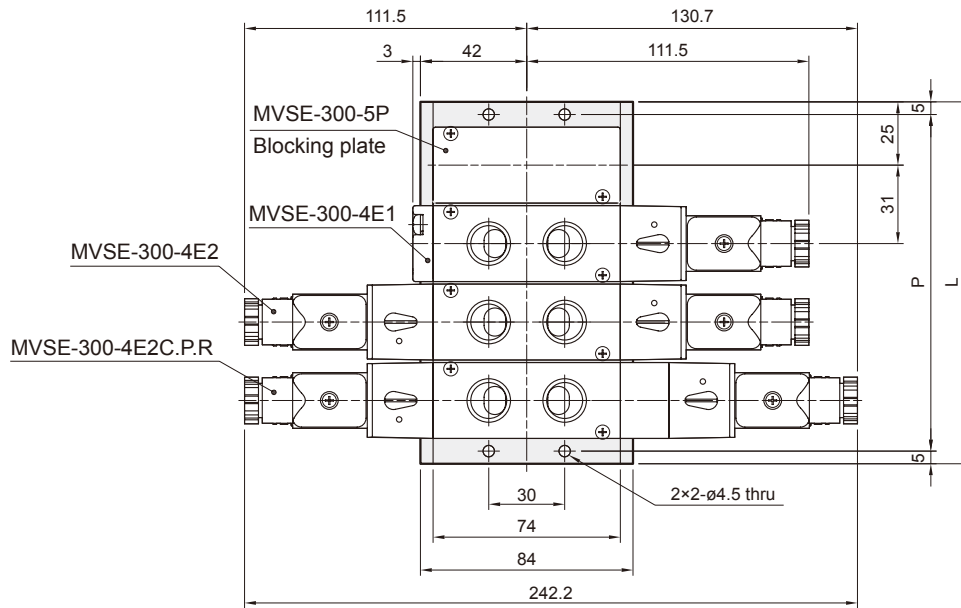
# MVSE-300 Manifold

## SOLENOID VALVE



### MVSE-300-5B\*

5 port (for body ported type)



No. of stations	P	L
2	71	81
3	102	112
4	133	143
5	164	174
6	195	205
7	226	236
8	257	267
9	288	298
10	319	329