

MVHB-220 series

HAND LEVER VALVE



Mindman



Specification

Model	MVHB-220-4TV MVHB-220-4TV-SP	MVHB-220-4TV* MVHB-220-4TV*-SP
Bore No. (Port size)	8A (Rc1/4)	
No. of port	5	
No. of position	2	3
Medium	Air	
Operating pressure range	0~0.8 MPa	
Effective orifice	18 mm ²	16 mm ²
Ambient temperature	-5~+60°C (No freezing)	
Weight	193 g	234 g

Order example

MVHB - 220 - 4TVC - SP - M - G

MODEL

BODY WIDTH

4: 4way (5 port)

VALVE TYPE

Blank: 5/2
C: Closed center (5/3)
P: Pressure center (5/3)
R: Exhaust center (5/3)

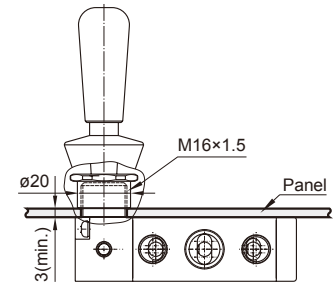
SPRING RETURN

Blank: Standard type
M: Panel mounting

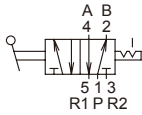
PORT THREAD

Blank: Rc thread
G: G thread
NPT: NPT thread

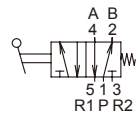
Panel mounting style



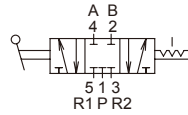
MVHB-220-4TV



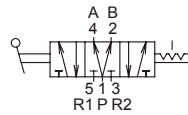
MVHB-220-4TV-SP



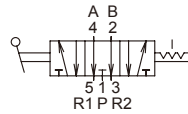
MVHB-220-4TVC



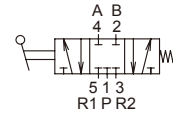
MVHB-220-4TVP



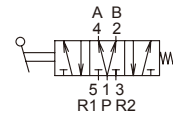
MVHB-220-4TVR



MVHB-220-4TVC-SP



MVHB-220-4TVP-SP



MVHB-220-4TVR-SP

