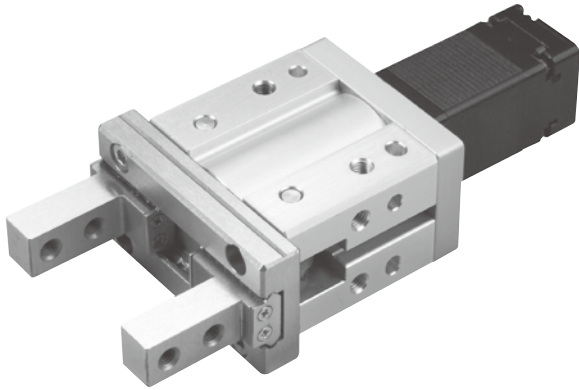


# MEHC-25 series

**ELECTRIC GRIPPER (WITH MOTOR)**



Mindman



## Specification

Model	MEHC-25
Gripper force (N)	22~98
Open and close stroke (mm) (*1)	14
Open and close speed (mm/s)	5~50
Position repeatability (mm)	±0.02
Guide structure	Linear guide
Operating temperature range	0~+40°C
Operating humidity range (%)	Below RH90
Motor dimension (mm)	□25
Weight (g) (*2)	552

\*1. Total stroke of both sides.

\*2. Weight of model with motor.

## Order example of gripper

**MEHC-25** — **S14** — **TC100** — **03** — **A0001**

Model    Spec.    Type    Corresponding controller    Cable length    Special order no.

Type	
<b>S14</b>	Standard type
<b>N14</b>	Narrow type

Corresponding controller	
<b>TC100</b>	

\* Please refer to 4-118.

Cable length	
<b>01</b>	1 m
<b>03</b>	3 m
<b>05</b>	5 m
<b>10</b>	10 m

\* Standard: 3 m

## Order example of controller

**TC100** — **03**

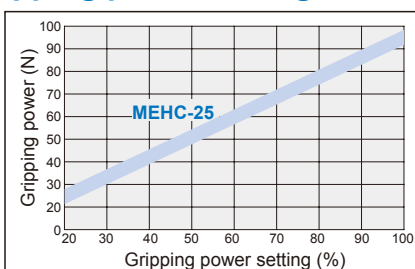
Controller    Cable length

Controller	
<b>TC100</b>	

Cable length	
Blank	No cable
<b>01</b>	1 m
<b>03</b>	3 m
<b>05</b>	5 m
<b>10</b>	10 m

\* Standard: 3 m

## Gripping power VS. Gripping power setting



## Allowable moment and force (N.m / N)

Maximum moment	
MY	1.94 (N.m)
MP	1.94 (N.m)
MR	3.88 (N.m)
Maximum force	
FV	255 (N)

\*MY: Allowable yawing moment

\*MP: Allowable pitching moment

\*MR: Allowable rolling moment

\*FV: Vertical maximum force

\*L: Distance to the loading location (mm).

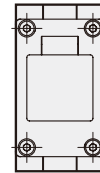
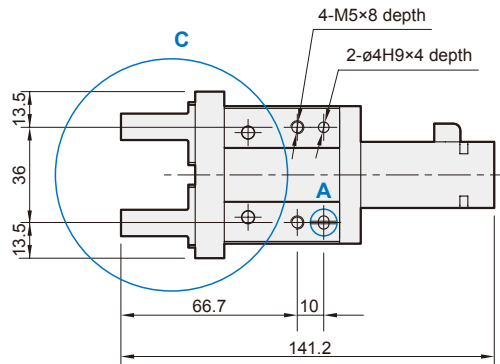
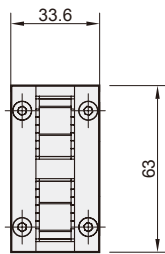
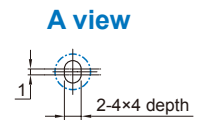
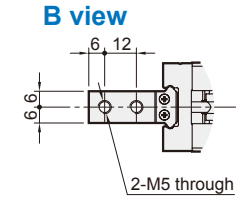
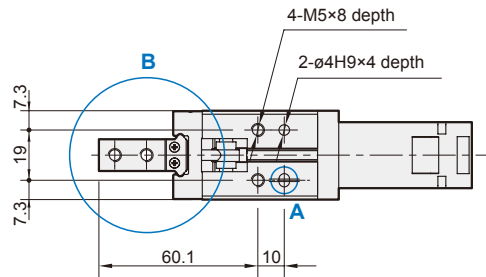
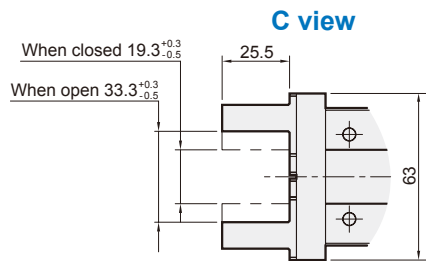
# MEHC-25 Dimensions

## ELECTRIC GRIPPER (WITH MOTOR)



Mindman

### S14 Standard type



### N14 Narrow type

