

Features

- Aluminium alloy tube provides both smooth lines and high corrosion resistance.
- Self lubricated nose bush gives long life.
- Versatile porting position available.
- End cushioning at both ends reduces impact loads.
- Available with magnetic piston and sensors.

Specification

Model	MCKGA / B		
Acting type	Double acting		
Tube I.D. (mm)	50	63	
Medium	Air		
Operating pressure range	0.05~1 MPa		
Proof pressure	1.5 MPa		
Ambient temperature	-5~+60°C (No freezing)		
Lubrication	Not required		
Available speed range	50~500 mm/sec		
Sensor switch (*)	RCA, RDKP		
Sensor switch accessories	RCA	BGA50	BGA63
	RDKP	PMB-040	

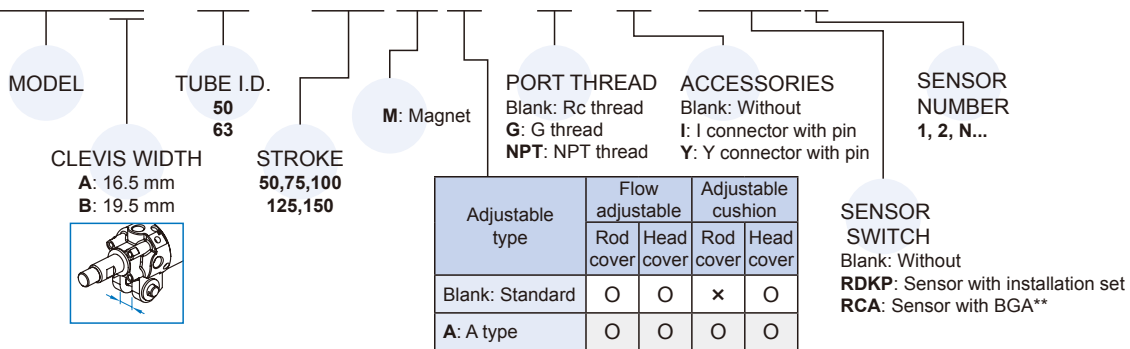
Table for standard stroke

Tube I.D.	Stroke (mm)
ø50, 63	50, 75, 100, 125, 150

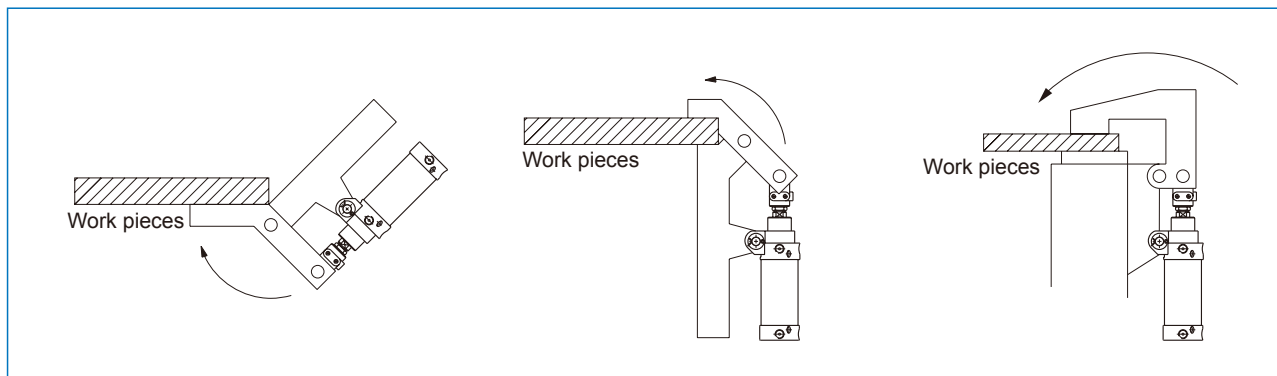
* RCA, RDKP specification, please refer to page 5-2, 11.

Order example

MCKGA — 50 — 100 M A — G — I — RDKP2

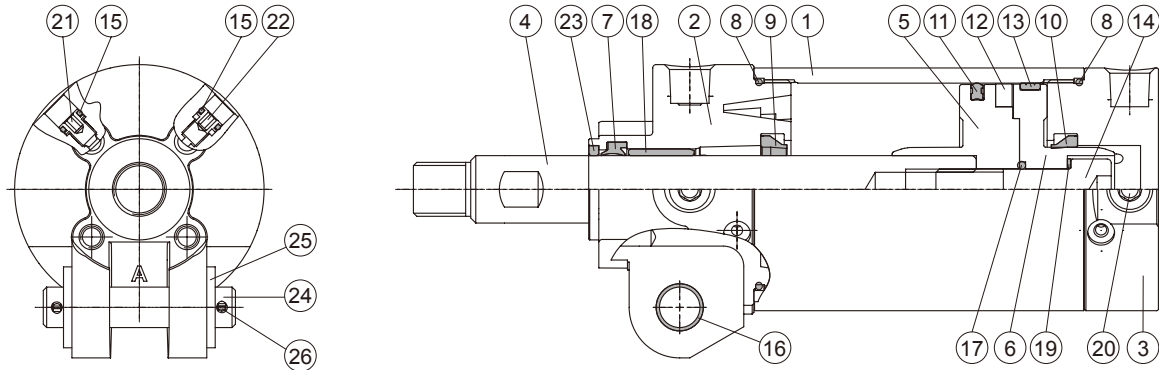


Application examples



CLAMP CYLINDER

Mindman



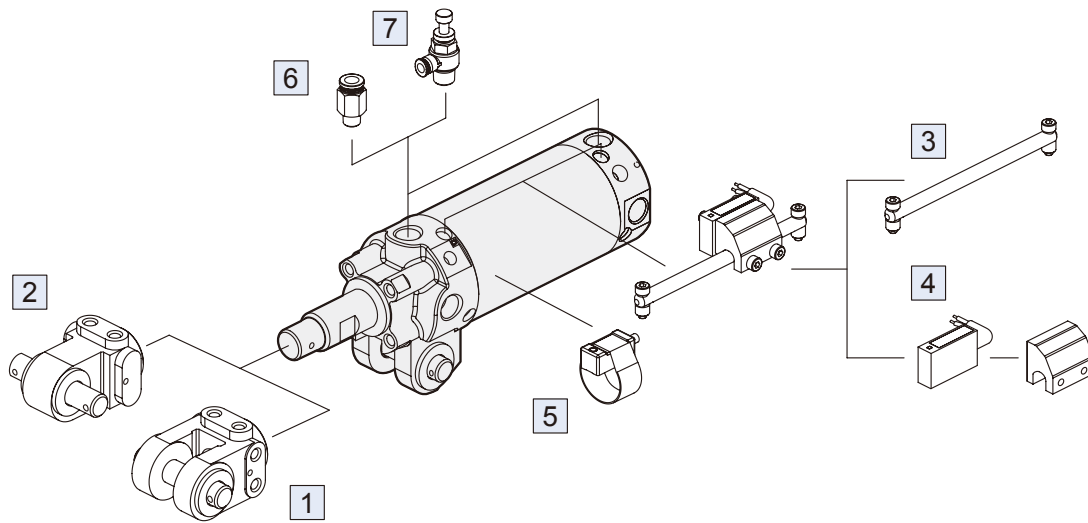
Material

No.	Part name	Material	Q'y	Component parts(inclusion)	Repair kits (inclusion)
1	Tube	Aluminum alloy	1		
2	Rod cover	Aluminum alloy	1	●	
3	Head cover	Aluminum alloy	1	●	
4	Piston rod	Medium carbon steel	1		
5	Piston-R	Aluminum alloy	1	●	
6	Piston-H	Aluminum alloy	1	●	
7	Rod packing	NBR	1	●	●
8	Cover ring	NBR	2	●	●
9	Cushion packing-R (*)	NBR	1	●	●
10	Cushion packing-H	NBR	1	●	●
11	Piston packing	NBR	1	●	●
12	Magnet ring	Magnet material	1	●	
13	Wear ring	Teflon	1	●	
14	Piston bolt	SCM	1	●	
15	Need valve packing	NBR	4	●	●
16	Bush	Copper	2	●	
17	Piston gasket	NBR	1	●	●
18	Rod bush	Copper	1	●	
19	Washer	Carbon steel	1	●	
20	Seal screw	Carbon steel	4	●	
21	Flow needle valve	Copper	2	●	
22	Cushion needle valve	Copper	2	●	
23	Scraper	Copper	1	●	
24	Pin	Carbon steel	1	●	
25	Washer	Carbon steel	2	●	
26	Split pin	Carbon steel	2	●	

Order example of repair kits

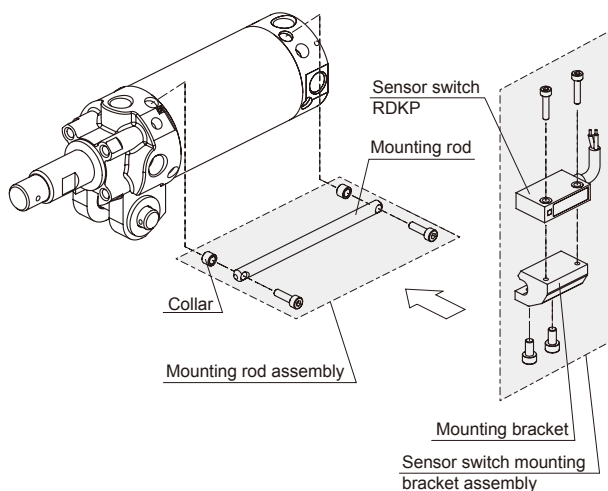
Tube I.D.	Repair kits
ø50	PS-MCKG-50
	PS-MCKG-50-A
ø63	PS-MCKG-63
	PS-MCKG-63-A

* Flow adjustable type without cushion packing-R.



No.	Accessories	Page
1	Accessories Y+PIN	2-21
2	Accessories I+PIN	2-21
3	Mounting rod assembly	2-20
4	Sensor switch RDKP+PMB-040	5-11
5	Sensor switch RCA+BGA**	5-2
6	Fitting PC (PISCO)	8-5 (Vol.1)
7	Speed controller JSC (PISCO)	8-18 (Vol.1)

Installation of sensor switch

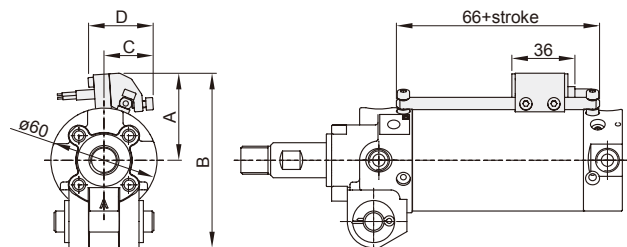


Order example of mounting rod assembly

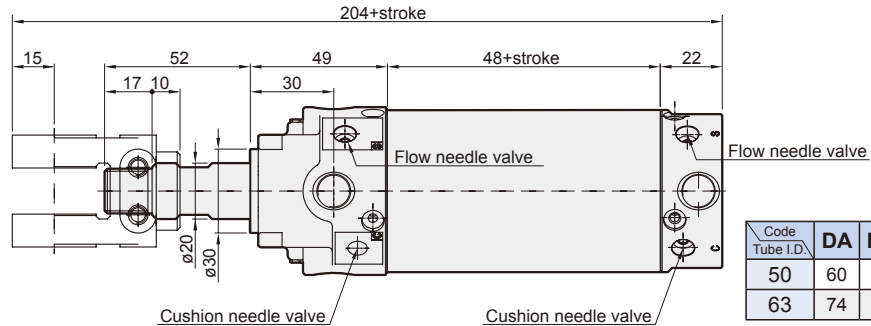
RZ – MCKG – 50

MODEL

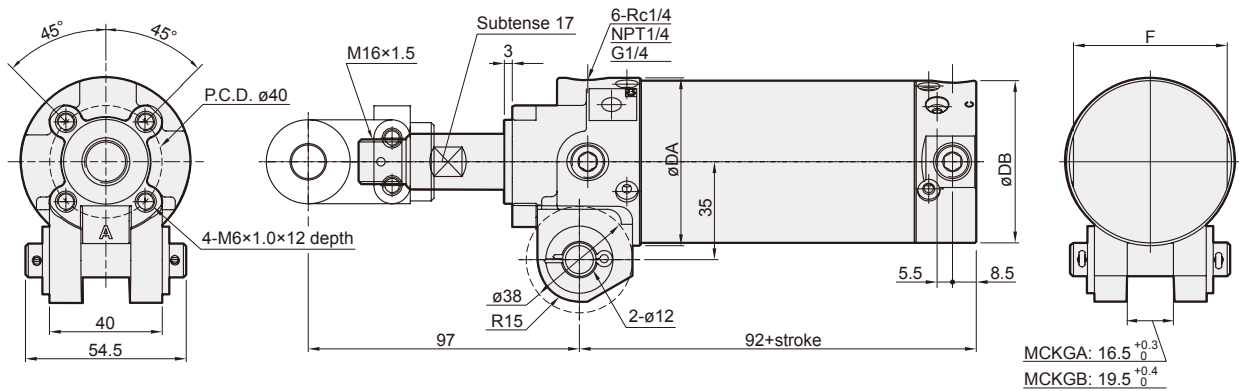
STROKE
(mm)



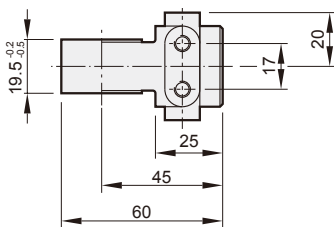
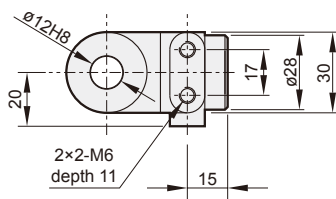
Code Tube I.D.	A	B	C	D
50	49.7	99.7	28.2	37.3
63	56.3	106.3	30.6	36.6



Code Tube I.D.	DA	DB	F
50	60	58	55
63	74	72	69

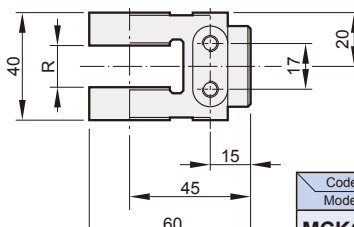
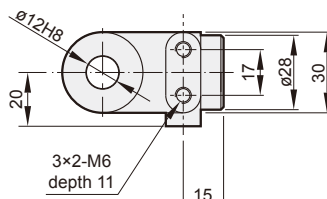


I connector



Order example
I — MCKG

Y connector

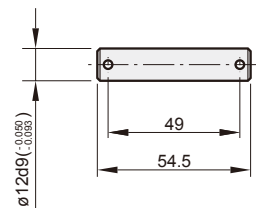


Order example
Y — MCKGA

Code Model	R
MCKGA	16.5 +0.3/0
MCKGB	19.5 +0.4/0

CLEVIS
WIDTH
A, B

Pin



Split pin: $\phi 1/8" \times 3/4" L$
(1set: 2pcs)

Order example
PIN — MCKG