



Features

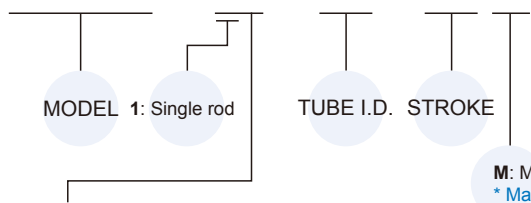
- Ultra Compact, light weight and space saving cylinder.
- Single and double acting available.
- Ideal for use in machinery where space is limited and incorporating sensor groove which enables flush fitting of sensors.
- Magnetic as standard.

Specification

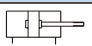
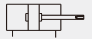
Model	MCJQ2	
Acting type	Double acting	
Tube I.D. (mm)	12,16	20,25
Port size	M5×0.8	
Medium	Air	
Operating pressure range	0.07~1 MPa	0.05~1 MPa
Proof pressure	1.5 MPa	
Ambient temperature	-5°C~+60°C (No freezing)	
Available speed range	50~500 mm/sec	
Sensor switch	RCB (Please refer to page 8-8)	

Order example

MCJQ2 – 12 – 20 – 25 M



STYLE

Code	Symbol	Description
1 1		Double acting / Male thread
1 2		Double acting / Female thread

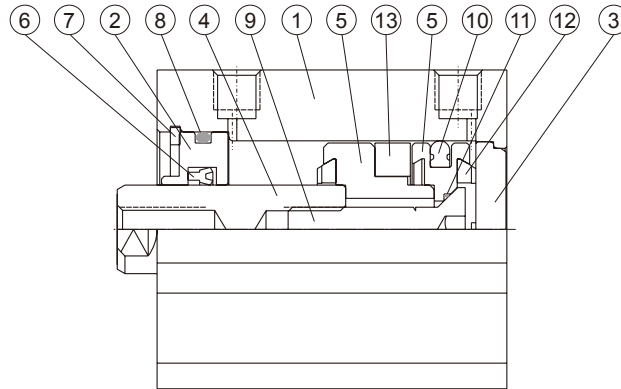
Double acting – Table for standard stroke

Tube I.D.	Standard stroke
ø12, 16	5, 10, 15, 20, 25, 30
ø20, 25	5, 10, 15, 20, 25, 30, 35, 40, 45, 50

- Stroke out of specification is also available.
- Please consult us if stroke out of specification.

Double acting

(with magnet)

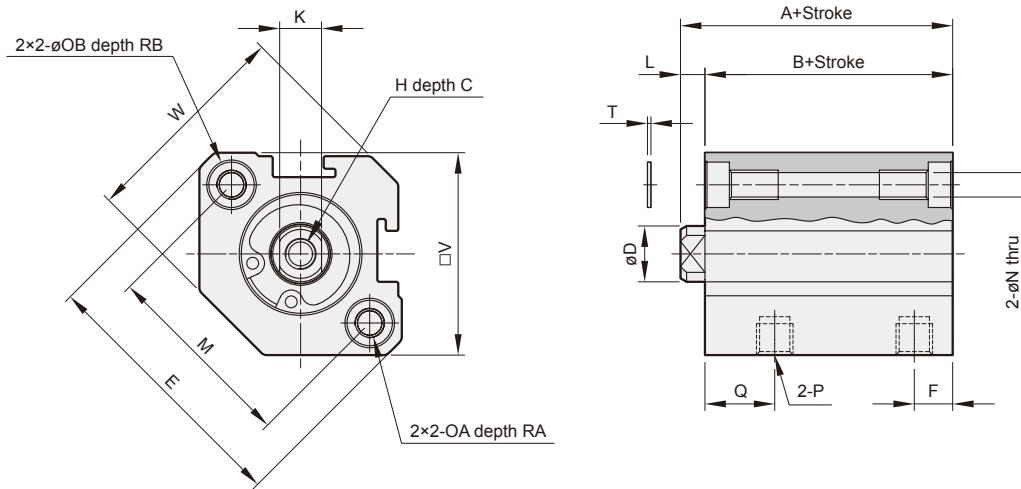


Material

No.	Part name	Material	Note
1	Body	Aluminum alloy	Hard anodized
2	Rod cover	Aluminum bearing alloy	Anodized
3	End cover	Aluminum alloy	Anodized
4	Piston rod	Stainless steel	
5	Piston	Aluminum alloy	Anodized
6	Rod packing	NBR	
7	Snap ring	Stainless steel	
8	Cover ring	NBR	
9	Piston bolt	Stainless steel	
10	Piston packing	NBR	
11	Piston gasket	NBR	
12	Cushion packing	NBR	
13	Magnet	Magnet	

Seal kit

	Rod packing	Piston packing	Cover ring	Piston gasket
Acting type	Double acting			
Q'y	1	1	2	1
12	KSYR-6	OPA-12	S-11	d4×w1
16	KSYR-8	OPA-16	S-14	d4×w1
20	KSYR-10A	OPA-20	S-18	d6×w1
25	KSYR-12	OPA-25	S-22.4	d8×w1

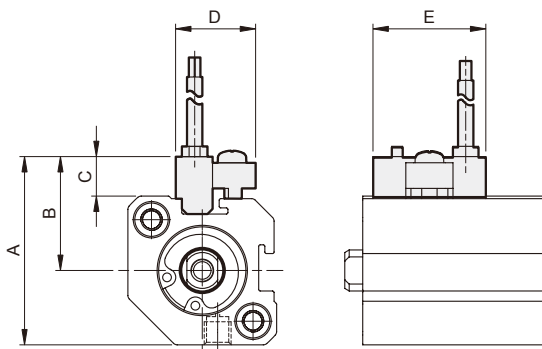


MCJQ2-11 male thread size

Code Tube I.D.	C1	H1	L1	X
12	9	M5×0.8	14	10.5
16	10	M6×1.0	15.5	12
20	12	M8×1.25	18.5	14
25	15	M10×1.25	22.5	17.5

Code Tube I.D.	Stroke range	A	B	C	D	E	F	H	K	L	M	N	OA	RA	OB	RB	T	P	Q	V	W
12	5~30	31.5	28	6	6	32	6.5	M3×0.5	5	3.5	22	3.5	M4×0.7	7	6.5	3.5	0.5	M5×0.8	11	25	28
16	5~30	34	30.5	8	8	38	5.5	M4×0.7	6	3.5	28	3.5	M4×0.7	7	6.5	3.5	0.5	M5×0.8	10	29	31
20	5~50	36	31.5	10	10	47	5.5	M5×0.8	8	4.5	36	5.5	M6×1.0	10	9	7	1	M5×0.8	10.5	36	30
25	5~50	37.5	32.5	12	12	52	5.5	M6×1.0	10	5	40	5.5	M6×1.0	10	9	7	1	M5×0.8	11	40	35

Installation of sensor switch



Order example

RCB — □

MODEL

RCB (C: Reed switch)
RNB (N: Solid state switch)

WIRE LENGTH

Blank: L=2000m
1M: L=1000m
QD: M8 3Pin connector
EQD: M8 3Pin connector

Code Tube I.D.	A	B	C	D	E
12	33	20.5	8	16	22
16	37	22.5	8	16	22
20	42.5	24	5.5	16	22
25	46	26	6	16	22