

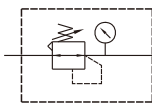
MAR501 series

AIR UNIT (R.UNIT)



Option: **MP41**

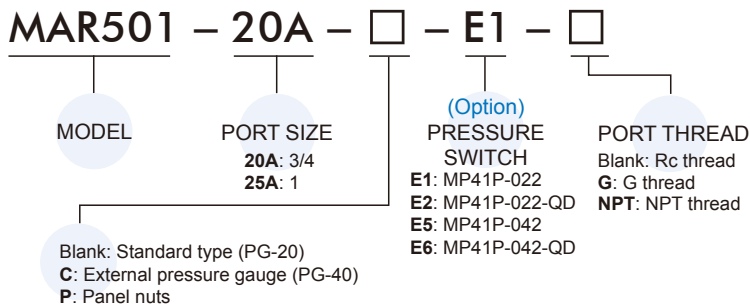
Symbol



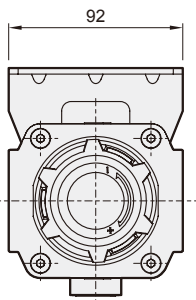
Specification

Model	MAR501	
Bore No.	20A	25A
Port size	3/4	1
Medium	Air	
Max. operating pressure	1.5 MPa	
Proof pressure	2 MPa	
Regulated pressure range	0.05~0.85 MPa	
Repeatability	±7% F.S.	
Ambient temperature	- 5~+60°C (No freezing)	
Attachment	Pressure gauge(PG-20),L-type bracket	
Weight	1460 g	

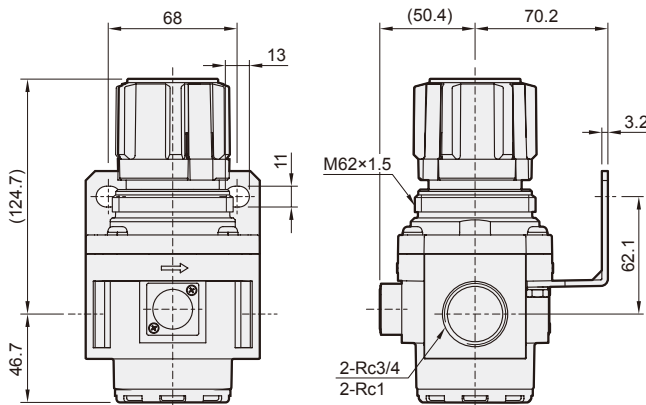
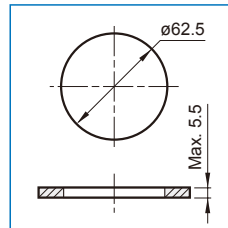
Order example



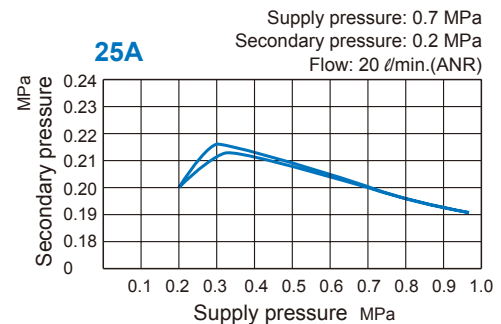
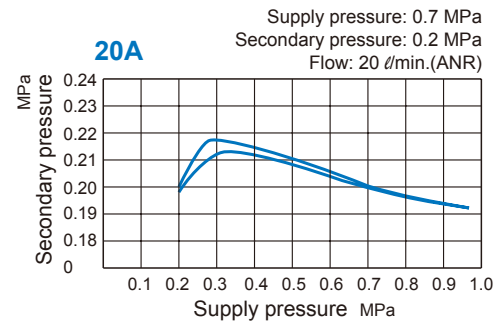
* PG-40 (C) and MP41 (E*) can not be selected at the same time.
* Refer to page 5-11 for the option of digital pressure switch MP41 (E*).



Panel mounting hole



Pressure characteristics



Flow feature

