

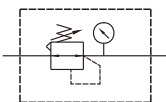
MAR403 series

AIR UNIT (R.UNIT)

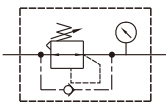


Option: MP41

Symbol



Standard



Backflow

Specification

Model	MAR403		
Bore No.	8A	10A	15A
Port size	1/4	3/8	1/2
Medium	Air		
Max. operating pressure	1 MPa		
Proof pressure	1.5 MPa		
Regulated pressure range	0.1~0.85 MPa		
Ambient temperature	- 5~+60°C (No freezing)		
Attachment	Pressure gauge (PG-20), L-type bracket		
Weight	450 g		

Order example

MAR403 K - 8A - □ - E1 - □

MODEL

Blank: Standard
K: Backflow function

PORT SIZE

8A: 1/4
10A: 3/8
15A: 1/2

(Option)

PRESSURE SWITCH

E1: MP41P-022
E2: MP41P-022-QD
E5: MP41P-042
E6: MP41P-042-QD

PORT THREAD

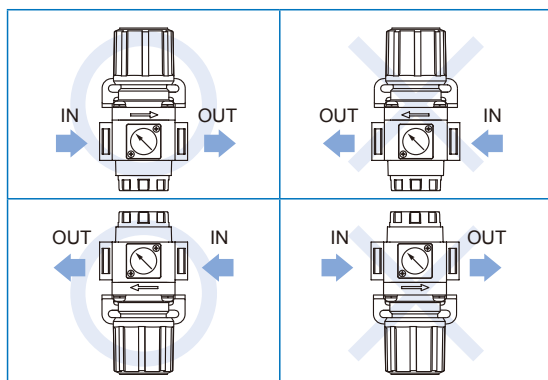
Blank: Rc thread
G: G thread
NPT: NPT thread

Blank: Standard type (PG-20)
C: External pressure gauge (PG-40)
J: Pressure switch (MPS series)

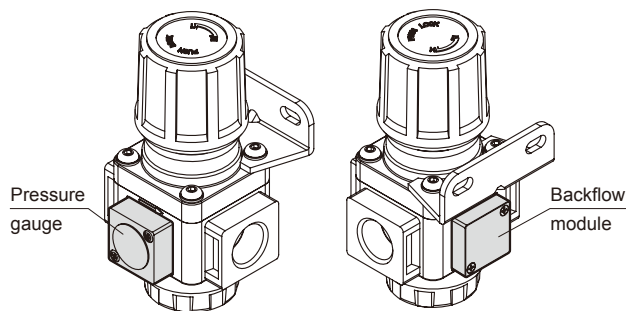
- * The backflow module can not be exchange with gauge.
When choosing the flow direction is left to right, the knob is up.
- * PG-40 (C) and MP41 (E*) can not be selected at the same time.
- * Refer to page 5-11 for the option of digital pressure switch MP41 (E*).

Precautions

When choosing the flow direction, the backflow module can not be exchange with gauge. If you have special order request, please contact the business.



Instructions



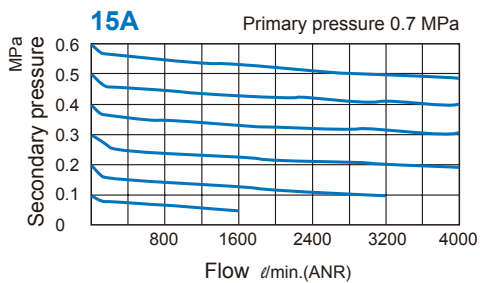
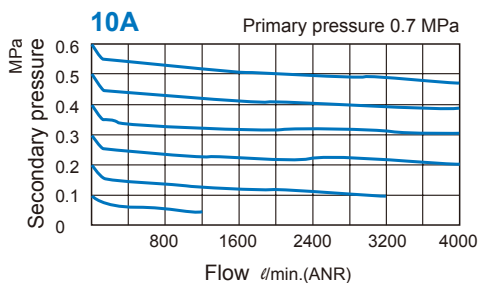
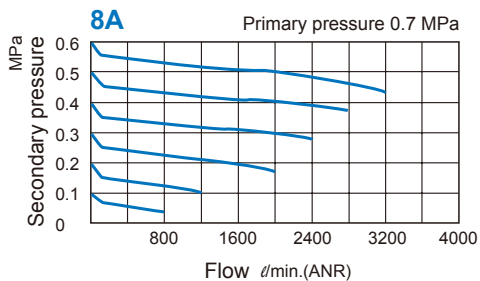
- When the air supply is cut off, the inlet pressure less than outlet pressure, the residual pressure return to the inlet side.
- Please set the inlet pressure to at least 0.05MPa higher than the set pressure.

MAR403 Capacity / Dimensions

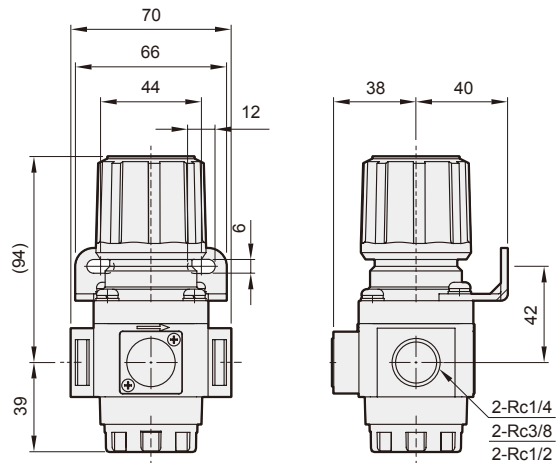
AIR UNIT (R.UNIT)



Flow feature



Dimensions



MAR403-P

MPS Series
pneumatic pressure switch

