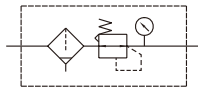


MAFR200 series

AIR UNIT (F.R.UNIT)



Symbol



Specification

Model	MAFR200	
Bore No.	6A	8A
Port size	1/8	1/4
Medium	Air	
Operating pressure range (*)	By order specifications	
Proof pressure	1.5 MPa	
Regulated pressure range	0.05~0.85 MPa	
Ambient temperature	- 5~+60°C (No freezing)	
Filter element	Standard: 40µm, Option: 5 µm	
Drain capacity	9.5 cm ³ , 25 cm ³ (MAFR200L)	
Attachment	Pressure gauge (PG-40), L-type bracket	
Weight	257 g, 226 g (MAFR200L)	

* Standard unit contains semi-auto-drain function when operating pressure below 0.05 MPa.

Order example

MAFR200L — 6A — 1K — □ — □ — □ — □

MODEL

PORT SIZE

Blank: PC bowl
N: Nylon bowl

BRACKET

Blank: L type
B3: Z type

Blank: Standard type
L: Longer case, no case guard

ADJUSTABLE PRESS. RANGE

Blank: 0.05~0.85 MPa
1K: 0.05~0.1 MPa
2K: 0.05~0.2 MPa
3K: 0.05~0.3 MPa
4K: 0.05~0.4 MPa

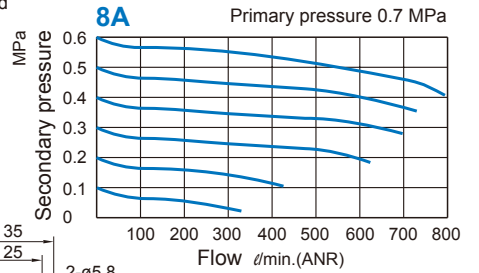
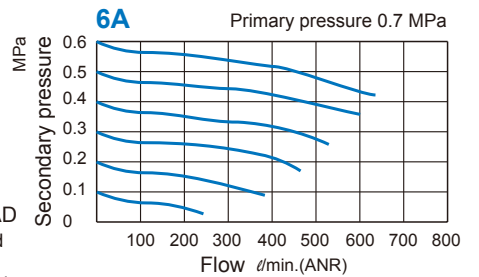
FILTER ELEMENT

Blank: 40µm
5u: 5µm

PORT THREAD

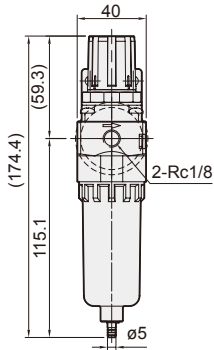
Blank: Rc thread
G: G thread
NPT: NPT thread

Flow feature

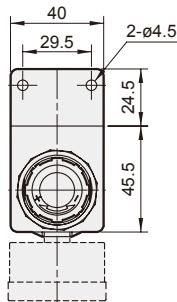
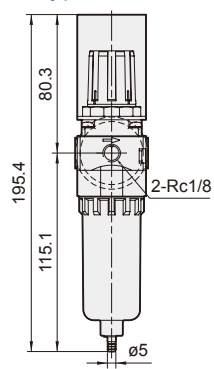


MAFR200L

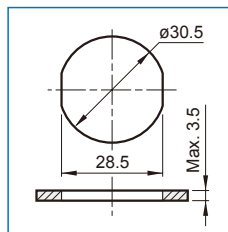
L type bracket



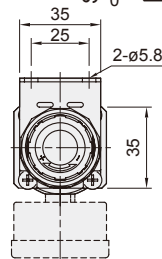
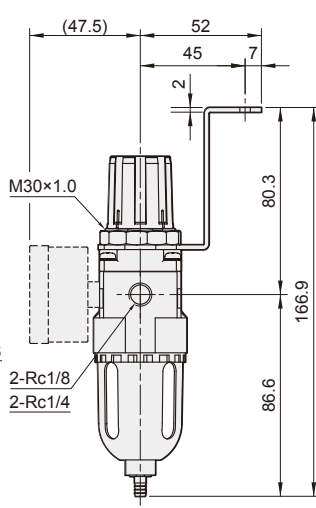
Z type bracket



Panel mounting hole



Z type bracket



L type bracket

