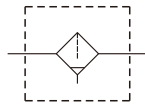


MAF401 series

AIR UNIT (FILTER)



Symbol



Specification

Model	MAF401		
Bore No.	8A	10A	15A
Port size	1/4	3/8	1/2
Medium	Air		
Operating pressure range (*1,2)	0.05~1.5 MPa		
Proof pressure	2 MPa		
Ambient temperature	- 5~+60°C (No freezing)		
Filter element	Standard: 40µm, Option: 5µm		
Drain capacity	70 cm ³		
Max. flow rate(*3) ℓ /min(ANR)	1500	2000	2500
Weight	480 g		

*1. Standard unit contains semi-auto-drain function when operating pressure below 0.05 MPa.

*2. Choose auto-drain FMRF300, the pressure range is 0.15~1 MPa.

*3. Flow is at pressure P=0.7 MPa with pressure drop ΔP=0.03 MPa.

Order example

MAF401 - 8A - □ - D - □ - □ - □

MODEL

PORT SIZE
8A: 1/4
10A: 3/8
15A: 1/2

EXTERIOR COLOR

Blank: Black & silver
W: Gray & white

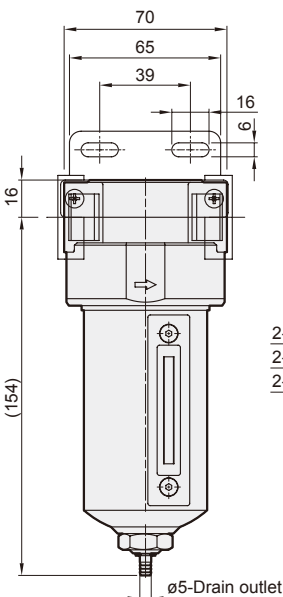
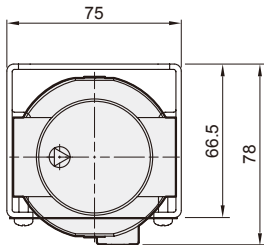
FILTER ELEMENT

Blank: 40µm
5u: 5µm

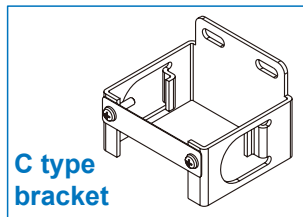
Blank: Without bracket
B: C type bracket

Blank: Semi-auto drain
D: Auto drain valve (FMRF300)

PORT THREAD
Blank: Rc thread
G: G thread
NPT: NPT thread

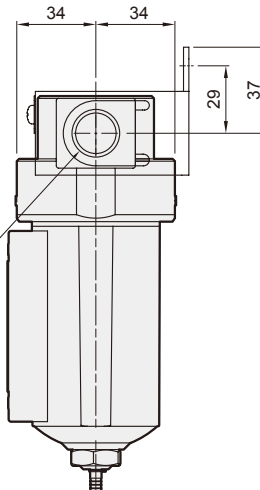


Option accessories



C type bracket

2-Rc1/4
2-Rc3/8
2-Rc1/2



Flow feature

