



Quick exhaust valve

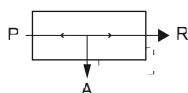
- For direct mounting at consumer
- Short way to exhaust
- Fast cylinder movement

Quick exhaust-valve that shortens the exhaust time for pneumatic linear and rotary actuators.

Circuit function:

When pressure is applied to input P it goes to output A. The ventilation R is locked.

When pressure in A is more than P then A is vented to R.



Technical data

Body material

Medium
 Medium temperature
 Seal material O-Ring
 Nominal pressure

Brass nickel-plated
 air, neutral gases
 0 to +80 °C
 NBR
 0,5 to 12 bar¹⁾

Body material

Medium
 Medium temperature
 Seal material O-Ring
 Nominal pressure

Stainless steel AISI 316
 air, neutral gases
 -10 to +120 °C
 to 1/4" FKM, from 3/8" PU
 0 to 40 bar¹⁾

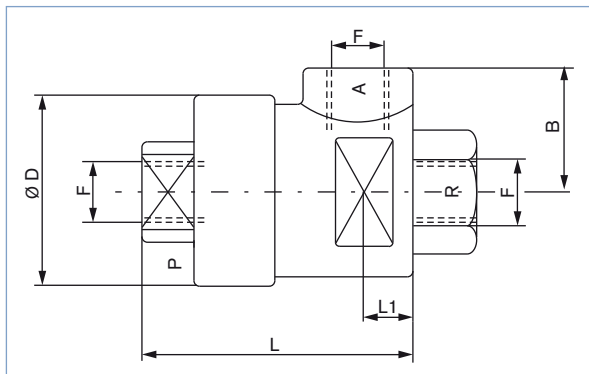
¹⁾ Pressure values [bar]: Overpressure with respect to atmospheric pressure

Other versions, ports, materials, seal materials on request.

Ordering chart, version brass nickel-plated

Port connections	Qn value air [l/min]: P → A	Qn value air [l/min]: A → R	Pressure range [bar]	F	B	Ø D	L	L1	Item no.
G 1/8	900	1700	0,5–12	G 1/8	18,5	28,5	48	16,8	783 709
G 1/4	1500	3400	0,5–12	G 1/4	24,0	34,0	65	24,5	783 710
G 1/2	3500	7800	0,5–12	G 1/2	30,0	44,0	82	33,0	783 711

Dimensions [mm]



Ordering chart, version stainless steel

Port connections	Qn value air [l/min]: P → A	Qn value air [l/min]: A → R	Pressure range [bar]	F	B	H	L1	L2	Item no.
G 1/8	650	1100	0,5–40	G 1/8	23,0	17,0	16,5	21,0	771 467
G 1/4	1290	2780	0,5–40	G 1/4	23,0	17,0	16,5	21,0	771 468
G 3/8	1810	3810	0,5–40	G 3/8	26,0	22,0	19,0	25,5	771 469
G 1/2	3810	5490	0,5–40	G 1/2	32,5	27,0	23,0	31,0	771 470

Dimensions [mm]

