

2/2-way servo assisted Solenoid Valve for liquids and gases



- Used universally
- Short fitting length
- Brass and stainless steel version

Type 6203EV can be combined with...



Type 2508
Cable plug



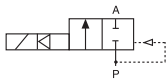
Type 1078
Timer unit



Type 2511
ASI
Cable plug

The Type 6203EV is a 2/2-way normally closed solenoid valve with a servo diaphragm system. It switches from 0.5 bar and can be used universally for fluids and gases. For complete opening, a differential pressure of at least 1 bar is necessary.

Circuit function A



Servo-assisted 2/2-way valve; normally closed, with 2-way pilot control

Electrical Power consumption		
Inrush	Hold (hot coil)	
AC [VA]	AC [VA/W]	DC [W]
Circuit function A		
24 - 36	14/8	8 (9,5) ¹⁾

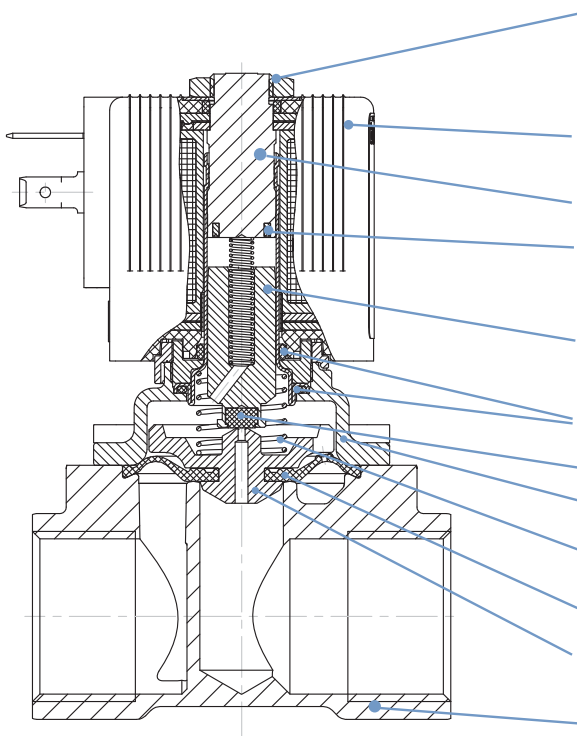
¹⁾ Value in bracket for colder coils.

Technical data	
Orifice	G 3/8 - G 2
Body material	Brass acc. to DIN EN 50930-6, stainless steel 1.4408 (316)
Inner part of valve	Brass body Stainless steel body
Seal material	NBR, FKM, EPDM (with KTW-W270 approval)
Media	NBR FKM EPDM
	Neutral fluids, water, hydraulic oil, oil without additives Per-solutions, hot oils with additives and hot air Oil and fat-free fluids - drinking water (KTW-W270 approval up to 60° C)
Ambient temperature	Max. +55 °C
Media temperature	NBR FKM EPDM
	-10 to +80 °C 0 to +90 °C with polyamide coil/0 to +120 °C with epoxy coil -30 to +90 °C with polyamide coil/-30 to +100 °C with epoxy coil
Voltages	024/DC, 230/50-60
Voltage tolerance	±10%
Duty cycle	100% continuous rating
Electrical connection	Tag connector acc. to DIN EN 175301-803 Form A (previously DIN 43650) for cable plug Type 2508 (see Ordering chart for accessory, page 4)
Protection class	IP 65 with cable plug
Installation	As required, preferably with actuator upright
Response times¹⁾	0.1 - 4 seconds (depending on orifice and differential pressure)

¹⁾ Measured at valve outlet at 6 bar and +20°C
Opening: pressure build-up 0 to 90%
Closing: pressure decay 100 to 10%

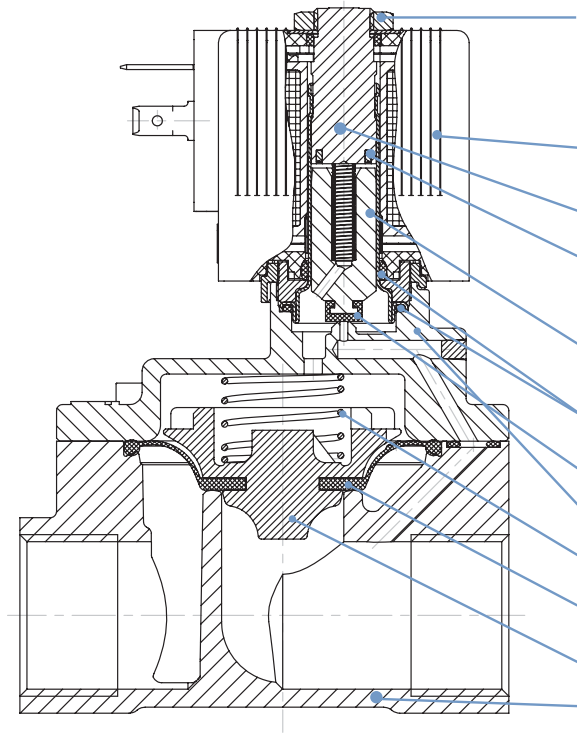
Materials

G 3/8 - G 3/4



Locknut:	Brass version:	Steel (surface thick-film passivated acc. to Rohs)
	Stainless steel version:	1.4305 PTFE coated
Coil:		Polyamide (EPDM, NBR) Epoxy (FKM)
Stopper:		1.4113
Shading ring:	Brass version:	Copper (Cu)
	Stainless steel version:	Silver (Ag)
Magnetic core:		1.4113
O-rings:		NBR, FKM, EPDM (KTM/W270)
Armature seal:		NBR, FKM, EPDM (KTM/W270)
Lid:		Brass or Stainless steel 1.4408
Spring:		1.4310
Diaphragm:		NBR, FKM, EPDM (KTM/W270)
Diaphragm support:		PPSGF40, Brass, Stainless steel
Valve body:		Brass or Stainless steel 1.4408

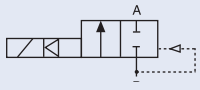
G 1 - G 2



Locknut:	Brass version:	Steel (surface thick-film passivated acc. to Rohs)
	Stainless steel version:	1.4305 PTFE coated
Coil:		Polyamide (EPDM, NBR) Epoxy (FKM)
Stopper:		1.4113
Shading ring:	Brass version:	Copper (Cu)
	Stainless steel version:	Silver (Ag)
Magnetic core:		1.4113
O-rings:		NBR, FKM, EPDM (KTM/W270)
Armature seal:		NBR, FKM, EPDM (KTM/W270)
Lid:		Brass or Stainless steel 1.4408
Spring:		1.4310
Diaphragm:		NBR, FKM, EPDM (KTM/W270)
Diaphragm support:		PPSGF40, Brass, Stainless steel
Valve body:		Brass or Stainless steel 1.4408

Ordering chart for valve

Brass versions, G3/8 - G2

Circuit function	Port connection	Orifice [mm]	Kv value water m ³ /h ¹⁾	Pressure range [bar] ²⁾	Weight [kg]	Item no. per voltage/ frequency [V/Hz]	
						024/DC	230/50
A 2/2-way valve NC 	Brass body, NBR Diaphragm, polyamid coil, medium temperature -10...+80°C						
	G 3/8	10	1.9	0.5 - 10	0.40	228 976	228 984
	G 1/2	10	1.9	0.5 - 10	0.45	228 977	228 985
	G 3/4	13	3.6	0.5 - 10	0.50	228 978	228 986
	G 1	20	8.5	0.5 - 10	1.00	228 979	228 988
	G 1 1/4	25	13	0.5 - 10	1.50	228 981	228 989
	G 1 1/2	40	31	0.5 - 10	3.00	228 982	228 990
	G 2	40	31	0.5 - 10	3.20	228 983	228 991
	Brass body, FKM Diaphragm, polyamid coil, medium temperature 0...+90°C						
	G 3/8	10	1.9	0.5 - 10	0.40	228 992	229 001
	G 1/2	10	1.9	0.5 - 10	0.45	228 993	229 002
	G 3/4	13	3.6	0.5 - 10	0.50	228 995	229 003
	G 1	20	8.5	0.5 - 10	1.00	228 996	229 004
	G 1 1/4	25	13	0.5 - 10	1.50	228 997	229 005
	G 1 1/2	40	31	0.5 - 10	3.00	228 998	229 006
	G 2	40	31	0.5 - 10	3.20	228 999	229 007
	Brass body, EPDM Diaphragm, polyamid coil, medium temperature -30...+90°C						
	G 3/8	10	1.9	0.5 - 10	0.40	229 008	229 015
	G 1/2	10	1.9	0.5 - 10	0.45	229 009	229 017
	G 3/4	13	3.6	0.5 - 10	0.50	229 010	229 018
	G 1	20	8.5	0.5 - 10	1.00	229 011	229 019
	G 1 1/4	25	13	0.5 - 10	1.50	229 012	229 020
	G 1 1/2	40	31	0.5 - 10	3.00	229 013	229 021
	G 2	40	31	0.5 - 10	3.20	229 014	229 022

¹⁾ Measured at +20°C, 1 bar ²⁾ pressure at valve inlet and free outlet

²⁾ Pressure data [bar]: Overpressure with respect to atmospheric pressure.

Please note that the cable plug has to be ordered separately, see Ordering chart for accessory and separate datasheet, Type 2508

Ordering chart for valves

Stainless steel versions, G3/8 - G1

Circuit function	Port connection	Orifice [mm]	Kv value water m ³ /h ¹⁾	Pressure range [bar] ²⁾	Weight [kg]	Item no. per voltage/frequency [V/Hz]	
						024/DC	230/50
A 2/2-way valve NC 	Stainless steel body, NBR Diaphragm, polyamid coil, medium temperature -10...+80°C						
	G 3/8	10	1.9	0.5 - 10	0.40	229 023	229 027
	G 1/2	10	1.9	0.5 - 10	0.45	229 024	229 028
	G 3/4	13	3.6	0.5 - 10	0.50	229 025	229 029
	G 1	20	8.5	0.5 - 10	1.00	229 026	229 030
	Stainless steel body, FKM Diaphragm, polyamid coil, medium temperature 0...+90°C						
	G 3/8	10	1.9	0.5 - 10	0.40	229 031	229 035
	G 1/2	10	1.9	0.5 - 10	0.45	229 032	229 036
	G 3/4	13	3.6	0.5 - 10	0.50	229 033	229 037
	G 1	20	8.5	0.5 - 10	1.00	229 034	229 038
	Stainless steel body, EPDM Diaphragm, polyamid coil, medium temperature -30...+90°C						
	G 3/8	10	1.9	0.5 - 10	0.40	229 039	229 044
	G 1/2	10	1.9	0.5 - 10	0.45	229 041	229 045
	G 3/4	13	3.6	0.5 - 10	0.50	229 042	229 046
	G 1	20	8.5	0.5 - 10	1.00	229 043	229 047

¹⁾ Measured at +20°C, 1 bar ²⁾ pressure at valve inlet and free outlet

²⁾ Pressure data [bar]: Overpressure with respect to atmospheric pressure.

Further versions on request



Port connection
NPT



Voltage
Further voltages



Material
Brass dezincification resistant



Temperature
EPDM version up to 100°C with epoxy coil
FKM version up to 120°C with epoxy coil

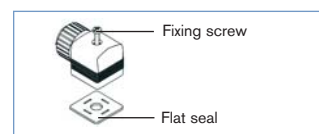


Approvals
VDE DIN EN 60730-2-8 (DN 10 - 13) with epoxy coil, UL / UR / CSA

Ordering chart for accessory

Cable plug Type 2508 according to DIN EN 175301-803 Form A

	Circuitry	Voltage / frequency	Item no.
	None (standard)	0 - 250 V AC/DC	008 376
	Further versions see datasheet Type 2508		

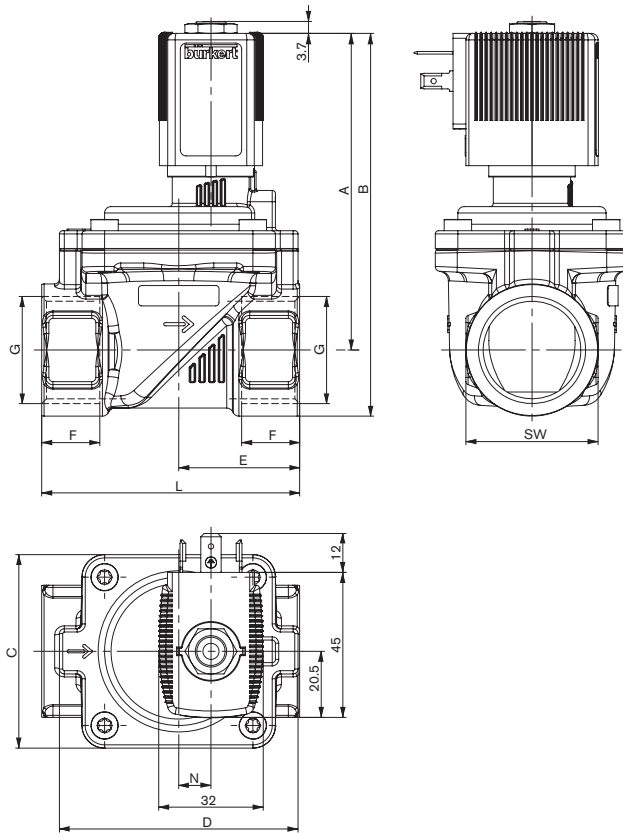


The delivery of a cable plug includes the flat seal and the fixing screw.

For other cable plug see separate datasheet Type 2508.

Dimensions [mm]

2/2-way servo assisted solenoid valve, Port connection G3/8 - G2



G	A	B	C	D	E	F	L	N	SW
G 3/8	71.1	82.1	36	45.6	22	12	50	-	22
G 1/2	73.1	86.6			24.5	14	50 ^①	-	27
							55 ^②		
G 3/4	84.4	100.4	40	46	32.5	16	65	-	32
G 1	101.9	122.4	60	74	37.5	18	80	10	41
G 1 1/4	111.4	136.4	70	85	46	20	95	15	50
G 1 1/2	125.4	155.4	99	114	61	22	126	23	60
G 2	131.4	166.4			64	24	132		70

① only MS Threaded port version

② only VA Threaded port version