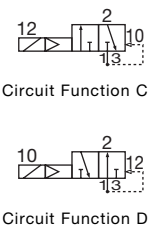


3/2 Way Solenoid Valve Servo-Assisted



5411



G 1/4, Polyamide Body

- ✓ Suitable for Manifold Mounting
- ✓ High Flow Rates
- ✓ Manual Override as Standard

Type 5411 is a servo-assisted 3/2 way valve with a poppet design and normally open or normally closed outlet ports. The poppet chamber is either pressurized or exhausted via a 3/2 way pilot valve. A minimum pressure differential of 1 bar is required to provide reliable switching. The valves can be mounted on single channel manifolds (up to six valves) for convenience.

Process Specification

| | |
|-----------------------|---|
| Materials | |
| Body | Polyamide (reinforced) with moulded-in metal threads |
| Valve internals | Stainless Steel / Plastic |
| Sealing | NBR |
| Fluids | Neutral media, e.g. lubricated or unlubricated compressed air |
| Temperatures | |
| Fluid | -10 up to +60°C |
| Ambient | Max. +55°C |
| Operating voltages | 24 V/DC 24 / 110 / 230 V/50-60 Hz |
| Voltage tolerance | ±10% |
| Duty cycle | 100% continuously rated |
| Electrical connection | Tag connectors according to DIN 43650 A for cable plugs type 2508 (see accessories) |
| Rating | IP 65 (with cable plug) |
| Installation | As required (preferably solenoid system upright) |

Flow rate: QNn-value air [l/min]
Measured at +20°C, 6 bar pressure at
valve inlet, 1 bar pressure difference.

Pressure ranges (bar)
Measured as overpressure to the
atmospheric pressure

*) Applied supply pressure must be 1 bar above the pilot pressure of the valve actuator.

| Orifice DN | QNn value air ¹⁾ | Port conn. | Electrical power consumption | | | Response times | | Press. range | Weight |
|---------------|-----------------------------------|---------------|---------------------------------|-----------------|-----------|-------------------|-----------------|-----------------|--------|
| | | | AC inrush [VA] | AC hold [VA] | DC [W] | opening [ms] | closing [ms] | | |
| [mm] | [l/min] | [inch] | [VA] | [VA] | [W] | [ms] | [ms] | [bar] | [kg] |
| 6.0 | 900 | G 1/4 | 11 | 6 | 2 | 50 | 30 | 1 – 10 | 0.3 |

Application: Actuation of large,
externally piloted valves



3/2 Way Solenoid Valve Servo-Assisted

Specifications - Ordering Chart (Other Versions on Request) for Type 5411

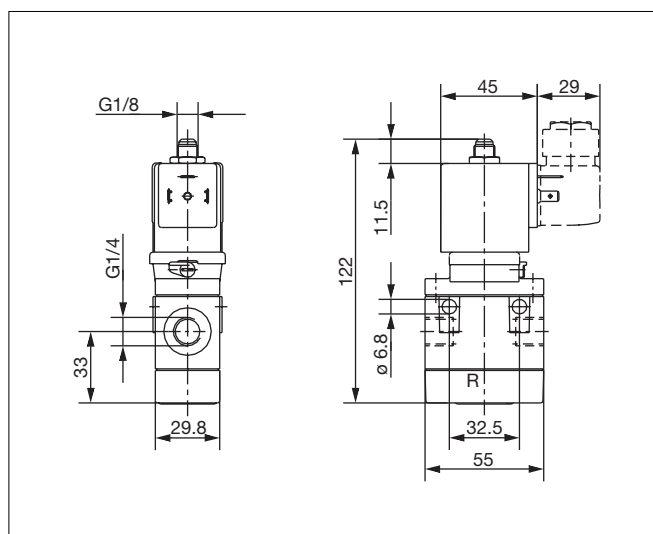
(with standard-cable plug 0-250 V AC/DC)

| Circuit function | Orifice DN [mm] | Port connection [inch] | Q _{Nn} -value air ¹⁾ [l/min] | Pressure range [bar] | Voltage / Frequency [V/Hz] | Item-No. |
|------------------|-----------------------|---------------------------|--|-------------------------|---|--|
| C | 6 | G 1/4 | 900 | 1 – 10 | 024/DC 024/50-60 110/50-60 230/50-60 | 134 607 Z 134 608 A 134 609 B 134 610 X |
| D | 6 | G 1/4 | 900 | 1 – 10 | 024/DC 024/50-60 110/50-60 230/50-60 | 134 611 L 134 612 M 134 613 N 134 614 P |

Specifications - Ordering Chart for Light Alloy Manifolds

| No. of valves | Hole spacing [mm] | Total length [mm] | Item-No. |
|---------------|----------------------|----------------------|-----------|
| 2 | 77 | 93 | 005 811 Q |
| 3 | 110 | 126 | 005 717 Z |
| 4 | 143 | 159 | 005 843 Y |
| 5 | 176 | 192 | 005 776 C |
| 6 | 209 | 225 | 005 718 A |

Dimensions [mm]



Ordering Chart for Accessories

| Device/ Accessory | Features | Item-No. |
|--|---|-----------|
| Cable plugs ¹⁾ Type 2508 | Standard cable plug, 0–250 V AC/DC (standard-delivery) ¹⁾ | 008 376 N |
| | with LED, 12–24 V AC/DC | 008 360 S |
| | with LED, 100–120 V AC/DC | 008 361 P |
| | with LED + varistor, 12–24 V AC/DC | 008 367 M |
| | with LED + varistor, 100–120 V AC/DC | 008 368 W |
| | with LED + varistor, 200–240 V AC/DC | 008 369 X |
| | (optional wirings and connection specifications see data sheet Type 2508) | |

¹⁾ The standard cable plug (0-250 V AC/DC), Order-No. 008 376 N is part of the standard delivery.
Ordering of optional cable plugs with separate item number.

A wide selection of further cable plugs is available
(see data sheet type 2508)

