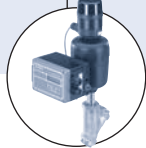




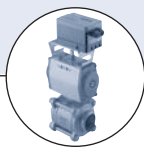
SideControl Positioner, electropneumatic positioner for pneumatic actuators

- Integral process controller (PID characteristic)
- Digital electronics
- Optional position feedback
- Attachment to linear or rotary actuators to NAMUR (DIN IEC 534-6, VDI/VDE 3845)
- Compact design
- Choice of internal or external position sensor

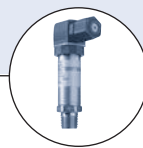
Type 1067 can be combined with...



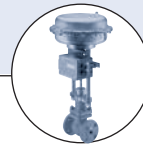
Type 2702
Angle seat valve



Type 8805
Rotary actuator



Type 8323
Pressure transmitter



Globe control valve
acc. to NAMUR/IEC

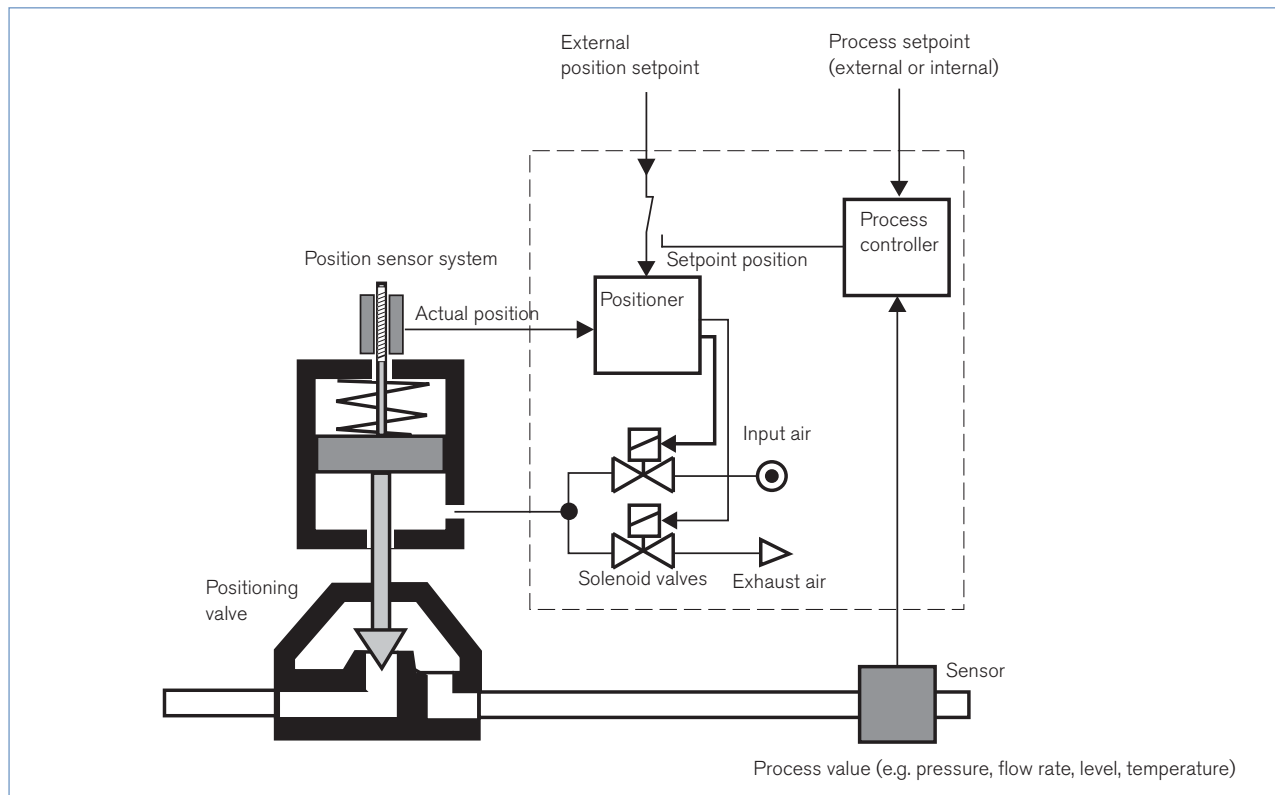
The SideControl Positioner Type 1067 serves to position pneumatically actuated positioner valves. SideControl finds applications in many areas by attachment to Burkert process valves or to linear and rotary actuators to IEC 534 or VDI/VDE 3845, or coupled to a separate position sensor or pneumatic positioning system. The compact design of the aluminium

body and the availability of versions for low air flow capacities enable attachment to positioning valves of small nominal diameter and size. The integral PID process controller may be activated to set up decentralized control loops.

Technical data	
Materials	
Body	Aluminium painted
Fluidic manifold	Aluminium anodized
Operating temperature	0 to +60 °C
Control medium	Quality classes acc. to DIN ISO 8573-1
Dust content	Class 4 ($\leq 15 \mu\text{m}$)
Particle density	Class 5 ($\leq 10 \text{ mg/m}^3$)
Pressure dew point	Class 4 ($\leq +3^\circ\text{C}$)
Oil concentration	Class 5 ($\leq 25 \text{ mg/m}^3$)
Pressure range	-1 to 6 bar
Air flow capacity	
small	35 l/min
large	70 l/min
Control air consumption in equilibrium	0 l/min
Port connection	G 1/8
Flow:	Measured at +20 °C, 6 bar pressure at valve inlet and 1 bar pressure difference
Q_N-value for air (l/min)	
Operating voltage	24 V DC
Electrical power consumption	< 10 W
Signal input	
Setpoint for positioner and process controller	0 (4) to 20 mA oder 0 to 10 V
Process value for PID controller binary input	4 to 20 mA make or break contact

Technical data	
Position sensor system	
Intern/Extern	Rotary potentiometer with coupling shaft
Electrical connection	Screw terminals 1.5 mm ² 2 PG9 bushings
Type of protection	IP 65
Option	Position feedback binary/analog (4-20mA)
Statement of pressure (bar)	Excess pressure to atmospheric
Positioner Rotation	Positioning range 0 to 180°
Ext. position sensor sys. Stroke	0 to 25 mm 0 to 50 mm
PID controller	
Proportional action factor (amplification)	Parameter range 0.0 to 999.9
Reset time	0.5 to 999.9
Rate time	0.0 to 999.9
Working point of controller	0 to 100%

Functional diagram



Supplementary functions

- Selection of a transfer characteristic (linear, equiprocentile or freely programmable) for correction of the flow or operating characteristic of the valve
- Determination of a dead band for the setpoint
- Tight closure function to assure tight closure of the valve
- Determination of safety position to be assumed under certain circumstances
- Determination of the direction of action of the setpoint or actual value
- Splitting of the entire setpoint range over several positioners
- Stroke limitation
- Limitation of positioning speed
- PID controller

Ordering table for positioner for attachment to a pneumatic actuator (other versions on request)

Actuator type	Circuit function	Position sensor system	Actuator size [mm] Actuator version ■■	Item no. for positioner	Item no. for external position sensor system	Item no. for associated attachment parts	
Bürkert piston actuators (Type 2730, 2731) Control diaphragm valves	Control function A (spring closing), single acting	external	Ø 80	449105	651713	642769	642292
			Ø 100	449105	653020	642769	
			Ø 125	550690	653020	642768	
			Ø 175 and Ø 225	550690	655534	550622	
Bürkert piston actuators (Type 2700, 2712) Globe control valves	Control function A (spring closing), single acting	external	Ø 80	449105	651713	642769	
			Ø 100	449105	653020	642768	
			Ø 125	550690	653020	642768	
			Ø 175 and Ø 225	550690	655534	550622	
Linear diaphragm actuators with mechanical interface acc. to DIN IEC 534-6	single acting	internal	small, 14 l/min	447787	–	420153	
			large, 35 l/min	416947	–	420153	
			double, 70 l/min	420093	–	420153	
	double acting	internal	small, 14 l/min	444210	–	420153	
Rotary actuators with bracket ■ and mech. interface VDI/VDE 3845	single acting	internal	large, 35 l/min	416948	–	420153	
			double, 70 l/m	420093	–	420152	
			small, 14 l/min	447787	–	420152	
	double acting	internal	large, 35 l/min	416947	–	420152	
Linear diaphragm actuators with mechanical interface and "Analog position feedback" board	single acting	internal	large, 35 l/min	428629	–	420152	
			double, 70 l/m	428630	–	420153	
			small, 14 l/min	444210	–	420152	
	double acting	internal	large, 35 l/min	416948	–	420152	

■ The bracket (also known as bridge) usually belongs to the scope of delivery of the actuator manufacturer or should be obtained from there.

■■ The air flow capacity of the positioner must be selected according to the actuator volume and version. This choice affects the dynamics and control performance of the entire control valve system.

Ordering chart for accessories

Version	Item no.
Console VA VDI/VDE3845-ISO5211 FO5 for mounting the pneumatic actuator of ball valve Type 8805	672243

Ordering note

On attachment to a Bürkert positioning valve, the positioner SideControl 1067 is supplied only as a part of a complete control valve (positioner, position sensor system, associated attachment parts and positioning valve).

For selection of a suitable positioning valve, please use the data sheets for the types 27XX.

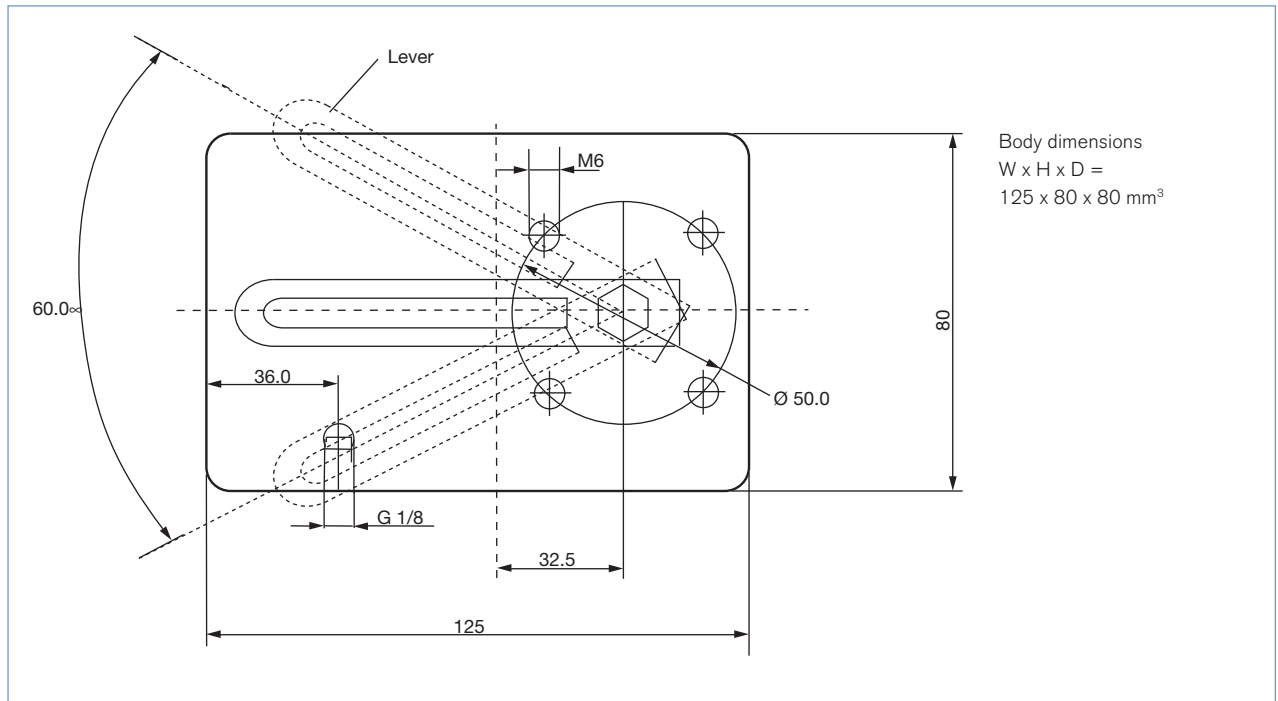
For ordering a complete control valve please write your specifications on the form supplied at the back of the separate datasheet.

For ordering a complete control valve, please state

- the **item no. of the positioner SideControl Type 1067**,
- the **item no. of the position sensor system**,
- the **item no. of the selected control valve and**
- the **item no. of the associated attachment parts with the remark SideControl Type 1067 - control valve.**

Bürkert supplies a completely assembled and tested control valve.

Dimensions



NAMUR connection plate (rear side) of the positioner with internal position sensor system. The lever serves (with diaphragm actuators only) to convert the stroke into a rotation (0 to 60°). With rotary actuators, the rotation (0 to 90°) is taken from the actuator shaft by means of an adapter.