

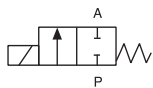


2/2 and 3/2-way Solenoid Valve for aggressive fluids

- Pivoted armature valve with manual override
- Direct-acting with hermetic isolation of fluid
- Different circuit functions
- Body in plastic and stainless steel
- Seal materials suitable for aggressive mediums

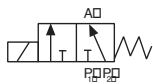
Type 0121 is a high quality, direct-acting 2/2 or 3/2 pivoted armature solenoid valve that can be used in a wide range of applications for opening, closing, dosing, mixing and distributing. The separation between the magnetic system and the medium chamber consists of an intermediate separating diaphragm system. The valve is particularly suitable for aggressive media

Circuit function A



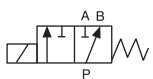
A 2/2-way
valve NC

Circuit function E



3/2-way
mixer valve

Circuit function F



3/2-way
distributor valve

Technical data

Orifice	DN2.0 to 8.0
Body material	PTFE, (PP, PVDF on request) PVC (resistant acc. to DIN 8062, 8061) Stainless steel 1.4401
Seal materials medium	FKM, FFKM, (EPDM on request) Oxydizing acids and substances, oils, salt solutions, waste gases, technical vacuum The valve is particularly suitable for aggressive media, aromatic compound, ether, ester, ketone (please see Bürkert chemical resistance chart)
FFKM	
Medium temperature body + seal (Material combination) PVC + FKM PTFE/St. st. + FKM PTFE/St. st. + FFKM	-10 to +50 °C -10 to +90 °C -10 to +90 °C
Ambient temperature	max. +50 °C
Viscosity	max. 37 mm ² /s
Voltage tolerance	±10%
Cycling rate	max. 100/min with AC max. 10/min with UC
Duty cycle Continuous operation Intermittent operation	St. st. body 100% ED and with universal Current (UC) with PVC 10% ED (10 min) with PP, PTFE and PVDF body (40% ED, 10 min)
Electrical connection with AC and DC	Cable plug for cable Ø 6 - 7 mm (supplied as standard) or cable connection
Protection class	IP 65 with cable or cable plug
Installation	As required, preferably with actuator upright

Technical data, continued

Power consumption						Response times		Weight	
Inrush		[VA]				Open	Closed	PTFE	Stainless steel
AC [VA]	UC [W]	AC [VA/W]	UC [W]	DC cold [W]	DC [W]	[ms]	[ms]	[kg]	[kg]
30	40	15/8	3	11-12	8	15-20	15-20	0.5	0.9

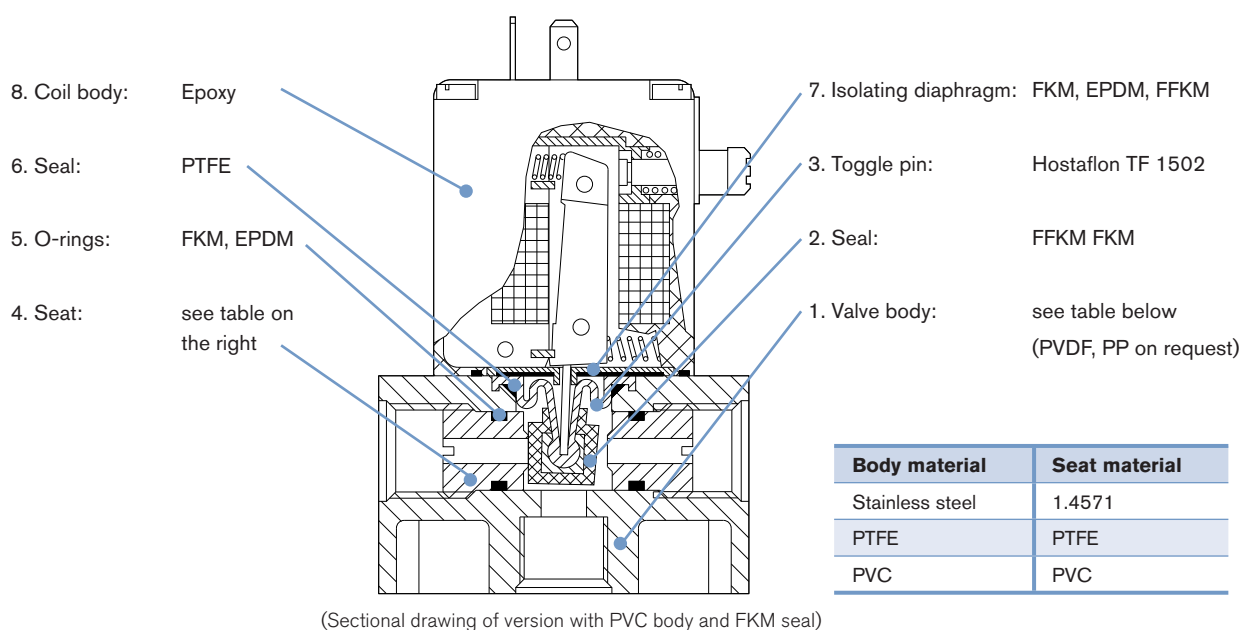
Response times [ms]:

Measured at valve outlet at 6 bar and +20°C.

Opening: Pressure build-up 0 - 90%

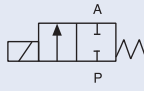
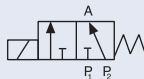
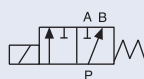
Closing: pressure relief 100 to 10%

Materials



Ordering chart for valves (other versions on request)

valves with plastic or stainless steel body, manual override and cable plug (UC with silicon cable, see footnote)

Circuit function	Port connection	Orifice [mm]	Kv value water [m3/h]	Pressure range [bar]	Body material	Seal material	Voltage/ frequency [V/Hz]	Item no.					
A 2/2-way valve NC 	Stainless steel body												
	G 1/4	4.0	0.3	0-2	St. st.	FKM	024/DC	055 244					
				0-4	St. st.	FKM	024/50	056 934					
		6.0	0.6	0-1	St. st.	FKM	042/50	052 817					
							230/50	052 441					
				0-2	St. st.	FKM	024/DC	040 482					
							024/50	057 086					
							110/50	067 659					
							230/50	054 595					
	Plastic body PVC												
	G 3/8	4.0	0.3	0 - 2	PVC	FKM	024/DC	049 654					
				0 - 4	PVC	FKM	024/50	048 940					
	G 3/8	6.0	0.6	0 - 1	PVC	FKM	024/DC	048 749					
							024/50	049 348					
				0 - 2	PVC	FKM	110/50	050 553					
							230/50	047 810					
							G 3/8	8.0	1.0	PVC	FKM	024/UC	048 697
												024/50	052 800
	230/50	052 302											
E 3/2-way mixer valve 	Stainless steel body												
	G 1/4	4.0	0.3	0-2	St. st.	FKM	230/50	042 457					
	Plastic body PTFE												
	G 3/8	4.0	0.3	0 - 2	PTFE	FFKM	024/UC	130 933					
						230/50	130 934						
F 3/2-way distributor valve 	Plastic body PVC												
	G 3/8	6.0	0.6	0 - 1	PVC	FKM	024/DC	049 533					
				0 - 2	PVC	FKM	024/50	052 181					
							110/50	050 336					
							230/50	047 916					

Note: UC with internal high-performance coil (60 W Inrush, 3 W hold) and moulded-in 1m silicon cable

i Further versions on request
**Materials**

Body material PP, PVDF.
 Seal materials EPDM, various body
 and seal material combinations.

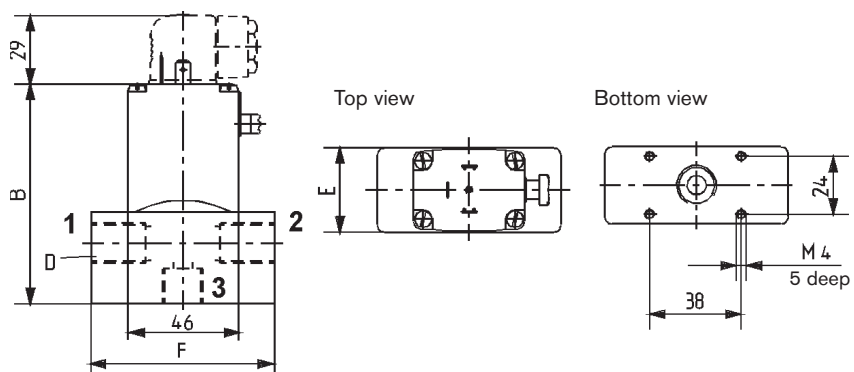
**Circuit function**

Other circuit functions, e.g. 2/2-way normally open.

**Additional**

ATEX Version (see Type 789).
 Optical or electrical feedback unit.

Dimensions [mm]



Body material	D	B	E	F
Stainless steel	G 1/4	89	32	76
PVC	G 3/8	91	35	65
Possible port configurations				
Circuit function	1	2	3	
A	P	–	A	
E	P1	P2	A	
F	A	B	P	